

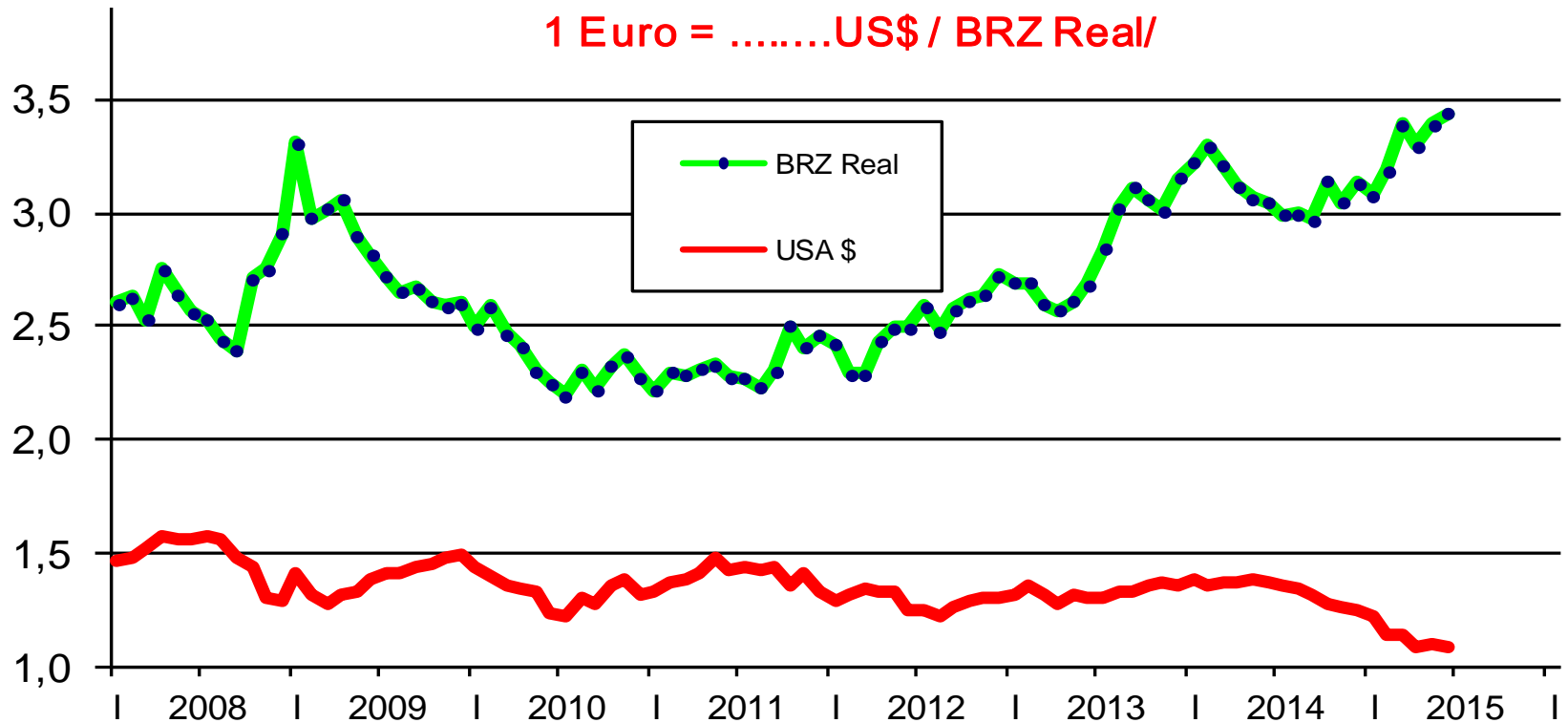
# EU Market Situation for Poultry

Committee for the  
Common  
Organisation of the  
Agricultural Markets  
18 June 2015



## €uro Exchange rate

1 Euro = .....US\$ / BRZ Real/

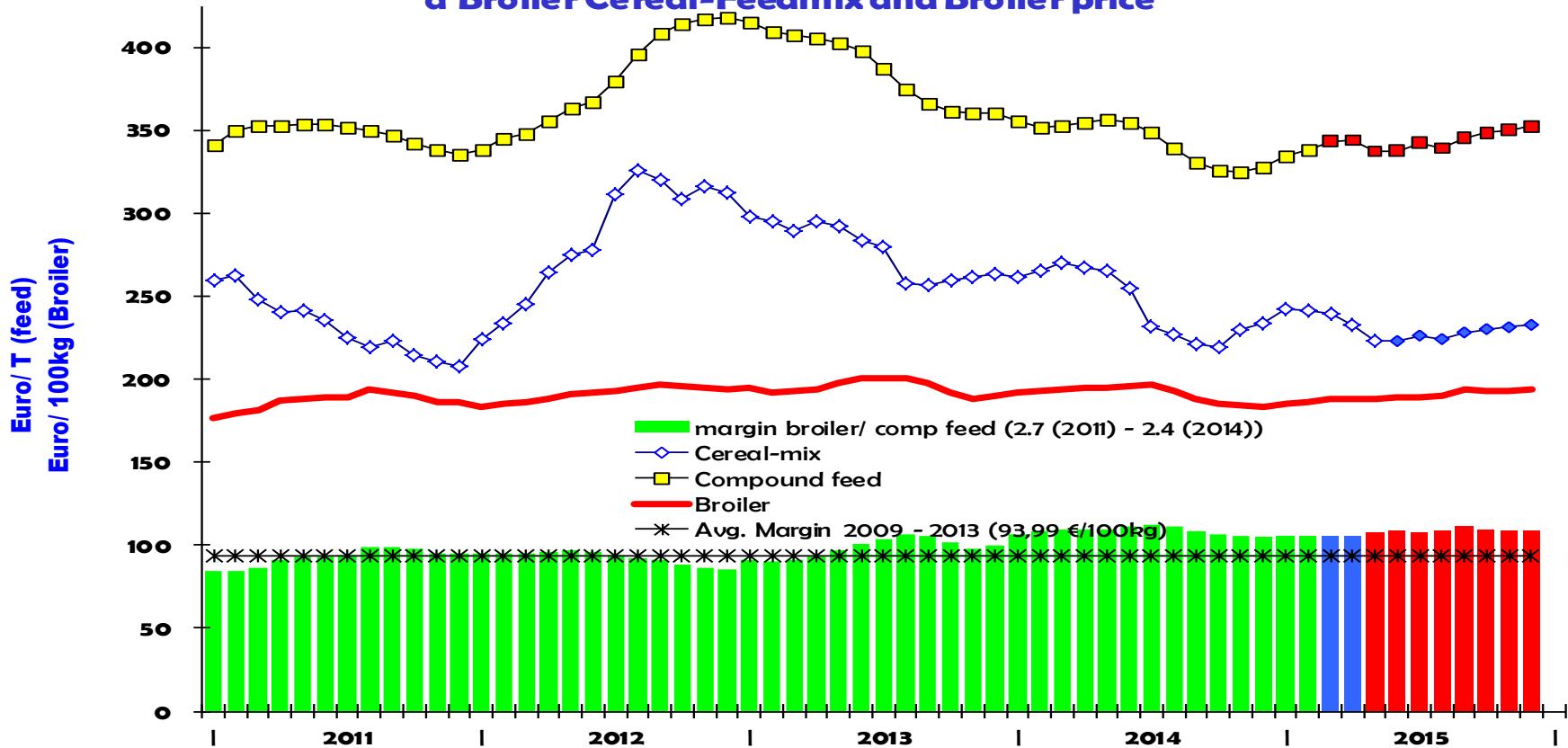


source:<http://europa.eu.int/comm/budget/inforeuro/fr/index.htm>



European Commission

### Price development of Compound feed for Broilers, a Broiler Cereal-Feedmix and Broiler price

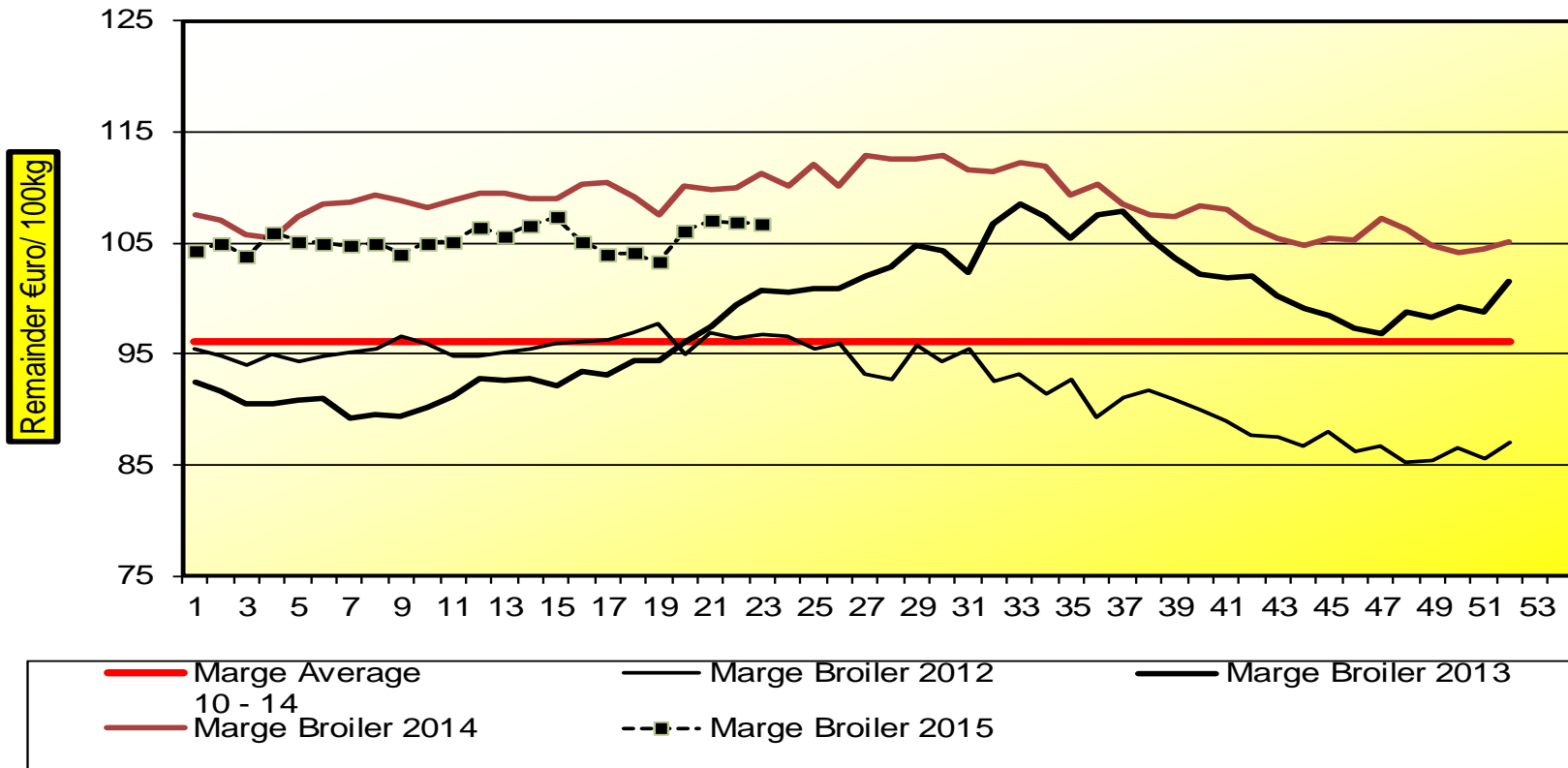


NB. Comp. Feed 2014 =Forecast as from February 2015.  
Cereal mix and Poultry = Forecast as from June 2015.

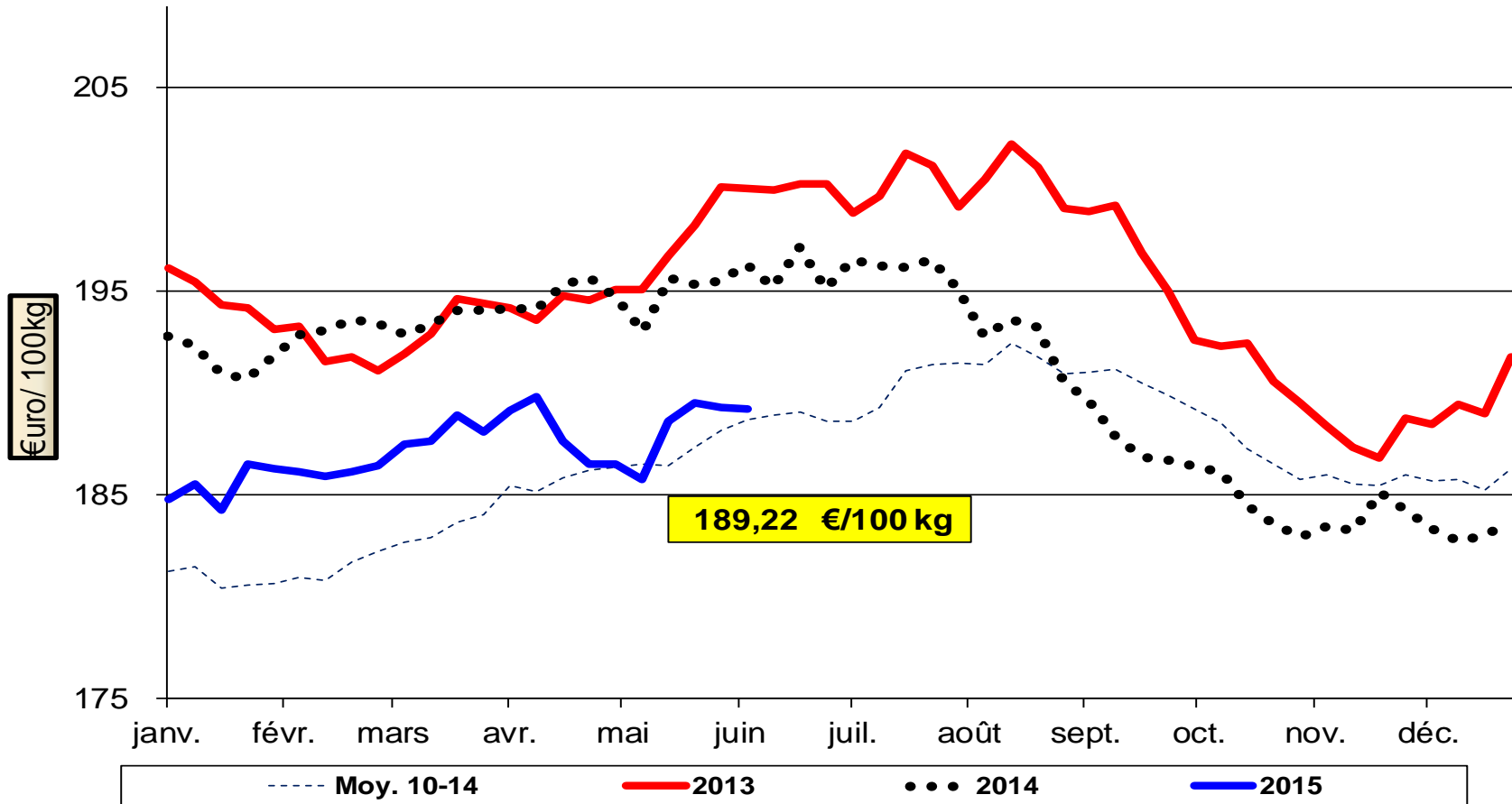


European  
Commission

## 100KG Broiler minus feedcost for Broilers feedconversionrate = 2,7 (2011) - 2,4 (2014)

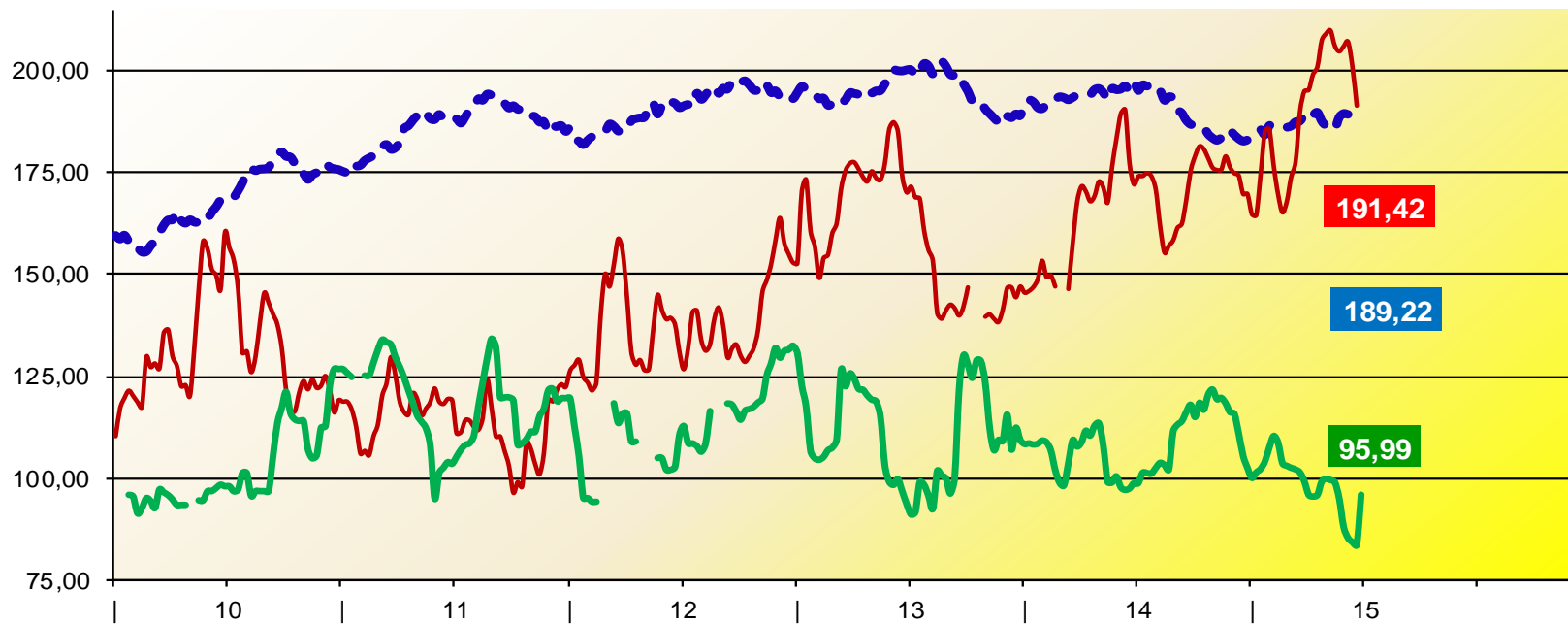


## Evolution of the weekly EU average price for Broiler



Source: MSs weekly communications

## Broiler prices in EU, USA and Brazil in €uro/ 100kg



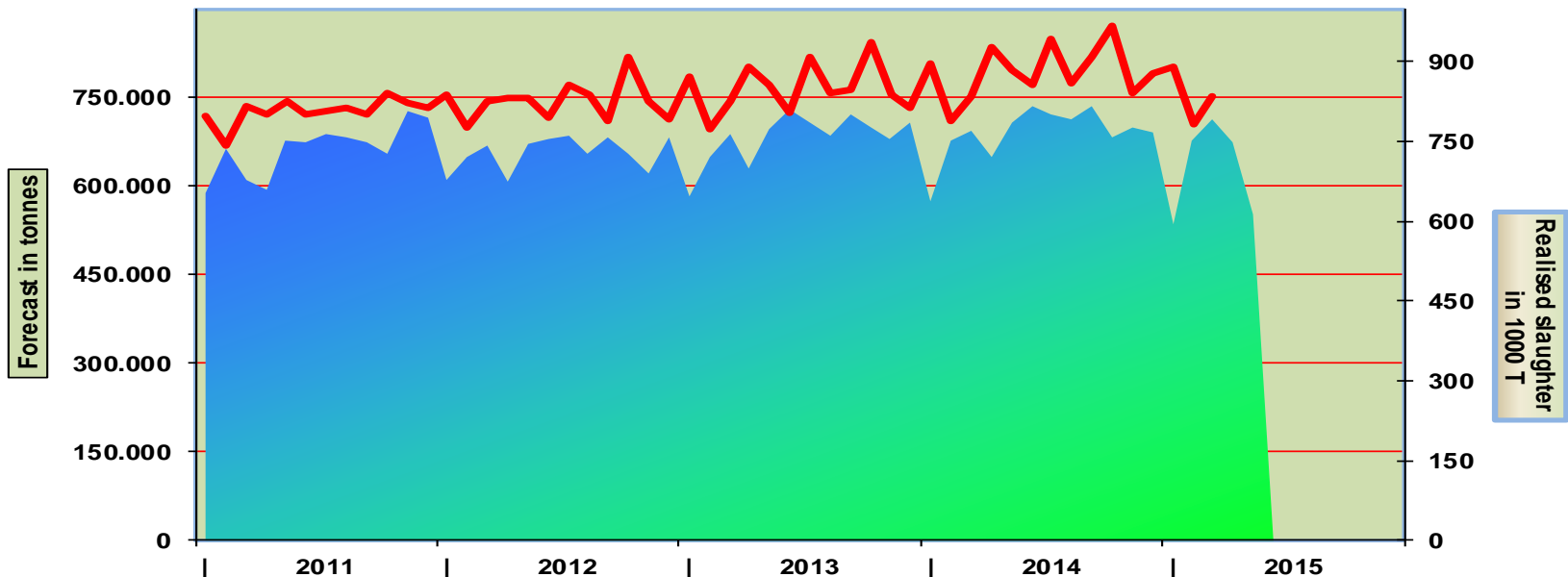
EU = weighted avg of MS prices Broiler 65%  
 US = weekly USDA prices Fresh chicken grade A ,Chicago  
 BR = avg of prices in main producing states (Ave world.com.br)

— — — EU broiler  
 — — — US broiler €uro  
 — — — BR Broil €uro/ (Ave world)



European  
Commission

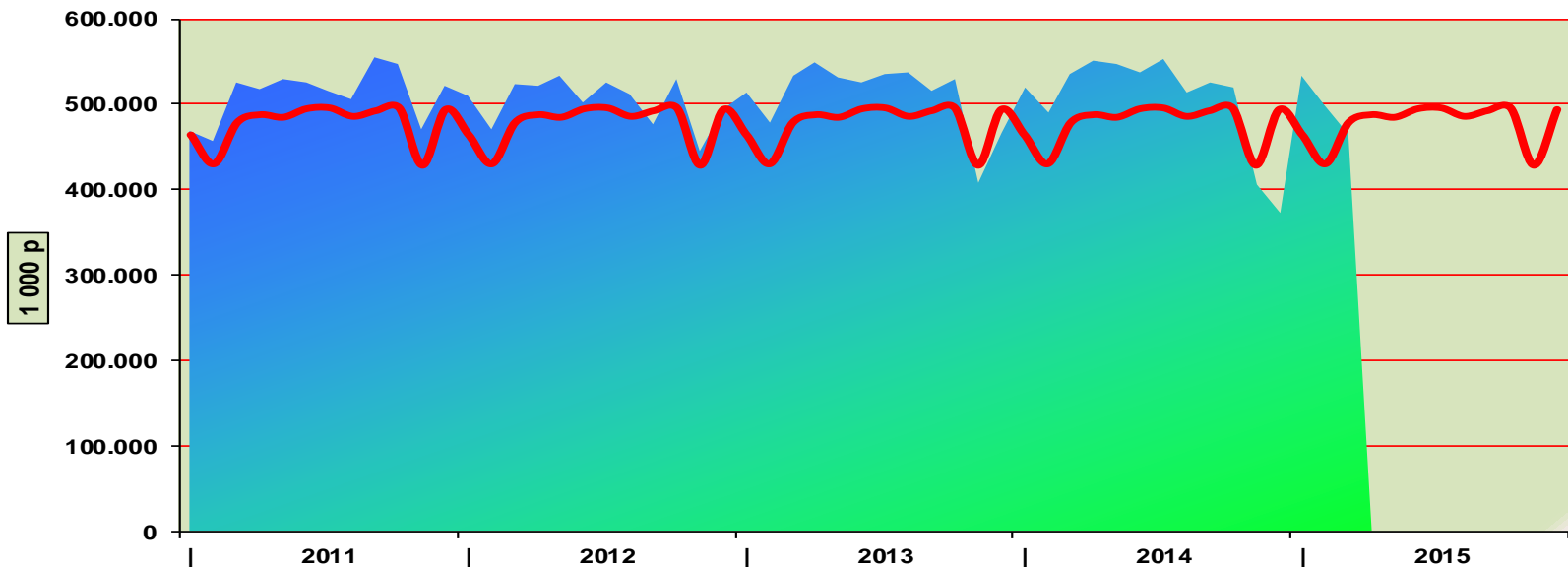
## Forecast and Production of Broilers. In Tonn



	Jan.	Feb.	March	April	May	June	July	Aug.	Sept.	Oct.	Nov.	Dec.
<b>2013</b>	580 736	647 722	686 792	629 810	696 568	727 383	705 763	683 621	718 661	695 745	679 356	706 715
<b>2014</b>	573 133	675 908	692 269	647 505	706 405	733 270	720 545	710 874	733 943	680 341	696 5 88	689 888
<b>2015</b>	534 590	676 032	710 523	671 775	551 187							

■ Forecast Production Broiler
 — Broiler slaughter

### Placings of Broiler chicks (1 000 pieces) compared to the baseline trend (baseline= monthly avg 2011 - 2015)



	Jan.	Feb.	March	April	May	June	July	Aug.	Sept.	Oct.	Nov.	Dec.
<b>2013</b>	513 645	477 489	532 079	549 359	531 593	524 160	535 570	535 521	514 895	529 349	443 478	511 348
<b>2014</b>	518 996	490 967	534 351	551 180	545 726	536 031	552 421	513 339	525 981	519 933	404 549	371 829
<b>2015</b>	532 643	497 724	463 904									

Source: Eurostat

Placings Broiler

(baseline= monthly avg 2011 - 2015) - Broiler chicks



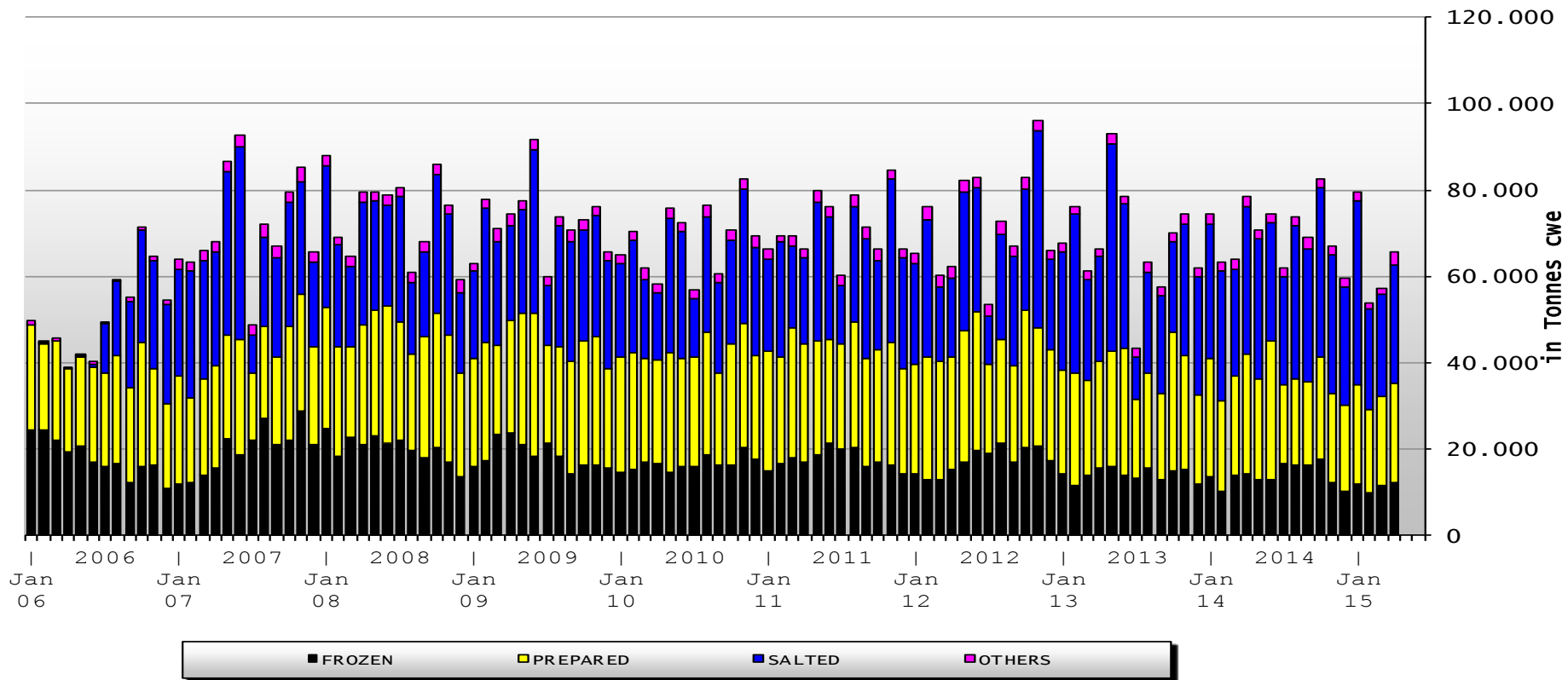


# TRADE

## Imports of Poultry meat from selected origins

	2011		2012		2013		2014		Jan-Apr 15		Compared to Jan-Apr 14
	tonnes	%	tonnes	%	tonnes	%	tonnes	%	tonnes	%	
Brazil	615.832	71,9%	583.449	67,3%	514.339	63,2%	500.569	59,7%	136.693	53,4%	- 23%
Thailand	155.788	18,2%	197.962	22,8%	228.238	28,0%	250.338	29,9%	92.271	36,0%	+ 16%
Ukraine	31	0,0%			276	0,0%	19.928	2,4%	8.614	3,4%	+++
Chile	44.433	5,2%	42.192	4,9%	30.515	3,7%	25.801	3,1%	7.673	3,0%	- 17%
China	13.874	1,6%	15.698	1,8%	18.145	2,2%	19.703	2,4%	5.466	2,1%	- 19%
Argentina	15.700	1,8%	13.766	1,6%	10.783	1,3%	10.993	1,3%	2.467	1,0%	- 22%
USA	129	0,0%	352	0,0%	193	0,0%	43	0,0%	794	0,3%	+++
Switzerland	1.253	0,1%	3.817	0,4%	3.817	0,5%	4.234	0,5%	730	0,3%	- 50%
Others	10.051	1,2%	9.968	1,1%	7.525	0,9%	6.326	0,8%	1.366	0,5%	
EXTRA EU 28	857.092		867.203		813.832		837.935		256.074		
% change			+ 1%		- 6%		+ 3%		- 8,6%		

## Imports of selected Poultry products

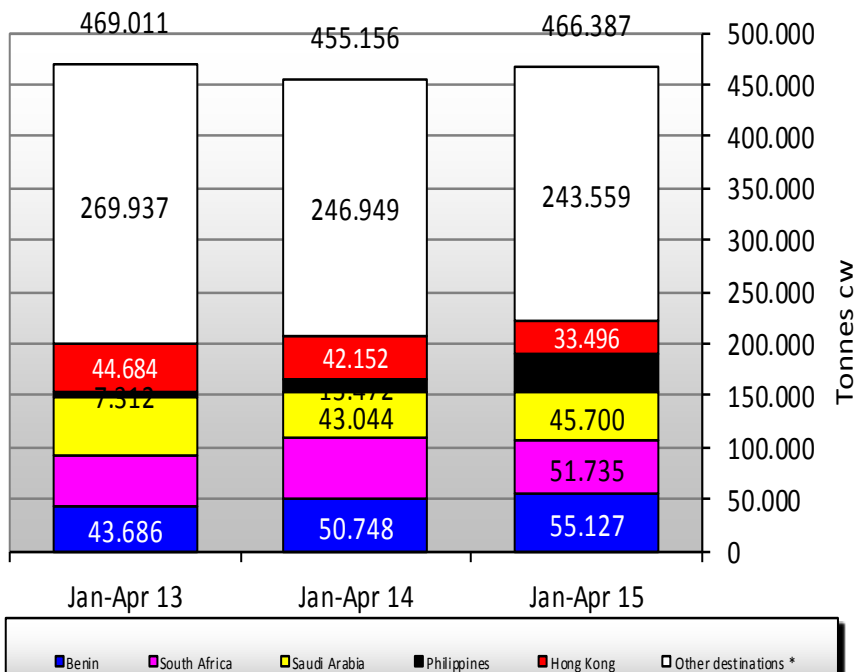


## Exports of Poultry Meat to Selected Destinations

	2011		2012		2013		2014		Jan-Apr 15		Compared to Jan-Apr 14
	tonnes	%	tonnes	%	tonnes	%	tonnes	%	tonnes	%	
Benin	126.213	8,9%	139.817	9,8%	139.247	9,8%	163.793	10,9%	55.127	11,8%	+ 9%
South Africa	94.083	6,7%	131.832	9,2%	158.510	11,1%	203.414	13,5%	51.735	11,1%	- 12%
Saudi Arabia	151.520	10,7%	149.310	10,4%	154.775	10,9%	123.559	8,2%	45.700	9,8%	+ 6%
Philippines	30.341	2,1%	30.764	2,2%	35.674	2,5%	57.621	3,8%	36.770	7,9%	+ 173%
Hong Kong	189.151	13,4%	126.072	8,8%	117.152	8,2%	136.088	9,0%	33.496	7,2%	- 21%
Ghana	68.978	4,9%	69.156	4,8%	75.216	5,3%	56.883	3,8%	22.454	4,8%	+ 55%
Ukraine	81.687	5,8%	103.427	7,2%	75.966	5,3%	80.208	5,3%	17.975	3,9%	+ 26%
Gabon	25.601	1,8%	26.298	1,8%	25.070	1,8%	29.409	2,0%	13.801	3,0%	+ 47%
Congo (Dem. Rep.)	29.972	2,1%	34.231	2,4%	28.625	2,0%	33.723	2,2%	11.479	2,5%	+ 12%
For.JRep.Mac	24.790	1,8%	32.747	2,3%	36.530	2,6%	33.552	2,2%	11.174	2,4%	+ 4%
Russia	115.136	8,1%	113.134	7,9%	95.179	6,7%	68.325	4,5%	300	0,1%	- 99%
Other Destinations	476.174	33,7%	473.766	33,1%	484.421	34,0%	517.311	34,4%	166.375	35,7%	
Extra-EU 28	1.413.647		1.430.554		1.426.365		1.503.885		466.387		
% change			+ 1%		- 0%		+ 5%		+ 2,5%		

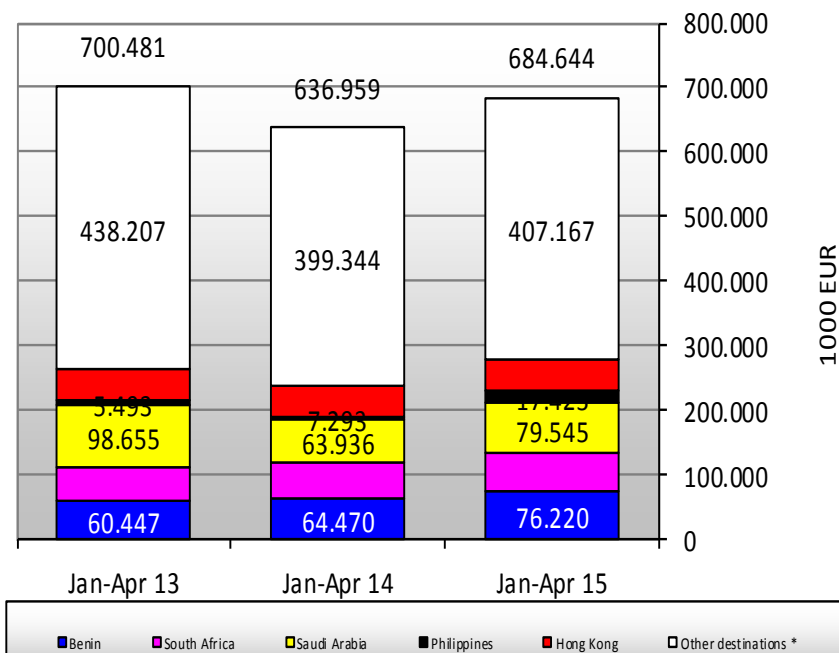
# EU Poultry meat Export

EU EXPORTS of Poultry Meat (Tonnes cwe)



\* countries trading less than 23 000 Tons

EU EXPORTS of Poultry Meat (1000 EUR)

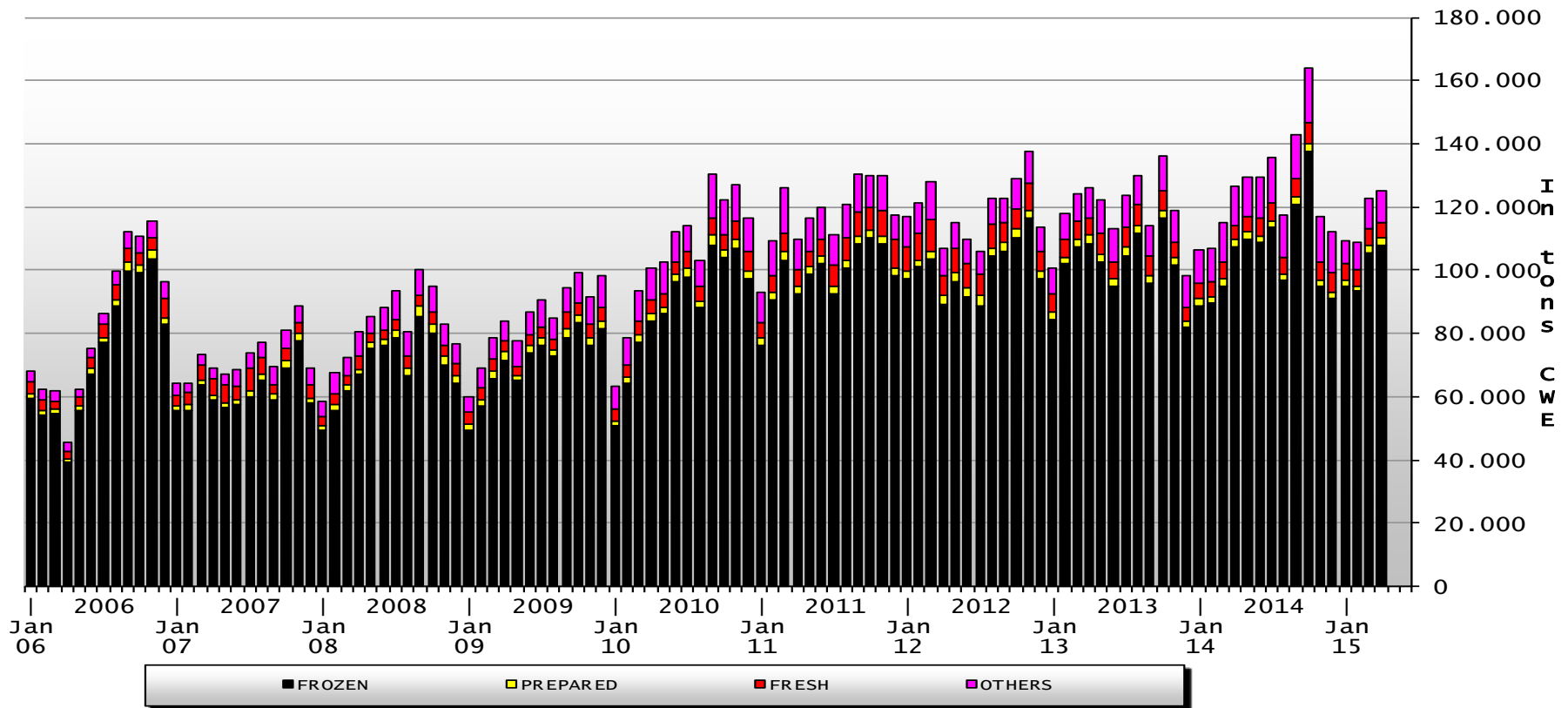


\* countries trading less than 48 000 ('000 EUR)

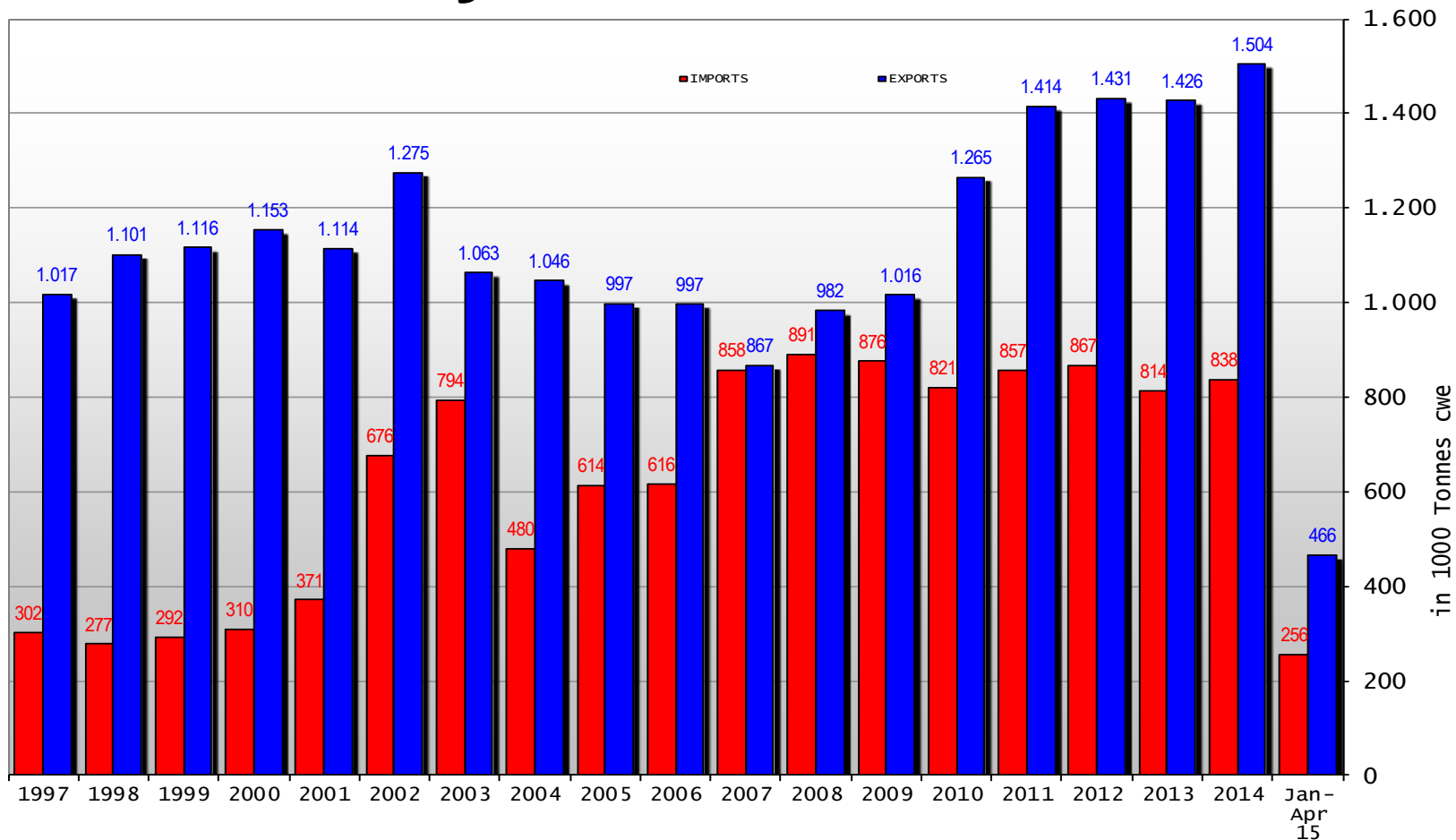


European  
Commission

## Exports of selected Poultry products



# EU Poultry meat Trade Balance



# Parameters for the calculation of the estimated production of broilers

	BE	BG	CZ	DK	DE	EE	GR	ES	FR	HR	IE	IT	CY	LV	LT	LU	HU	MT	NL	AT	PL	PT	RO	SI	SK	FI	SE	UK
Parameter	<b>2013</b>																											
National Average Live weight (kg) at Slaughter	2,40	2,10	1,90	2,10	2,11	2,39	2,40	2,66	2,02	1,99	2,04	2,60	2,64	2,10	2,44	2,40	2,33	2,55	2,23	1,83	2,44	1,85	2,20	2,20	2,12	2,34	1,91	2,23
National Average Carcass yield (%)	68%	73,0%	74,0%	75,0%	70,0%	71,0%	75,0%	70,2%	67,0%	69,4%	71,7%	70,1%	77,0%	74,4%	75,1%	68%	70,1%		74,0%	66,0%	75,0%	69,9%	72,4%	70,5%	72,5%	72,5%	75,0%	69,0%
National Average Mortality (%)	2,0%	4,3%	4,0%	2,5%	3,0-3,5% (l.w.) 4,0% (h.w.)	2,5% - 3,0%	6,0%	5,2%	4,2%	3,7%	2,9%	5,0%	3,2%	3,3%	5,0%	2,0%	4,2%	6,5%	3,5%	4,2%	4,2%	2,6%	2,5%	3,9%	3,5%	3,5%		4,8%
National Average Period of rearing (days)	40,0	51*	35,0	35,0	30-38	37-40	45,0	43,5	37,7	35,0	36,9	35/46	47,4	37,1	40,0	40,0	41,5	45,0	41,0	35,00	42,0	37,8	41,0	37,7	38,5	37,0		42,0