



BEEF & VEAL MARKET SITUATION



CMO Committee
18 June 2015

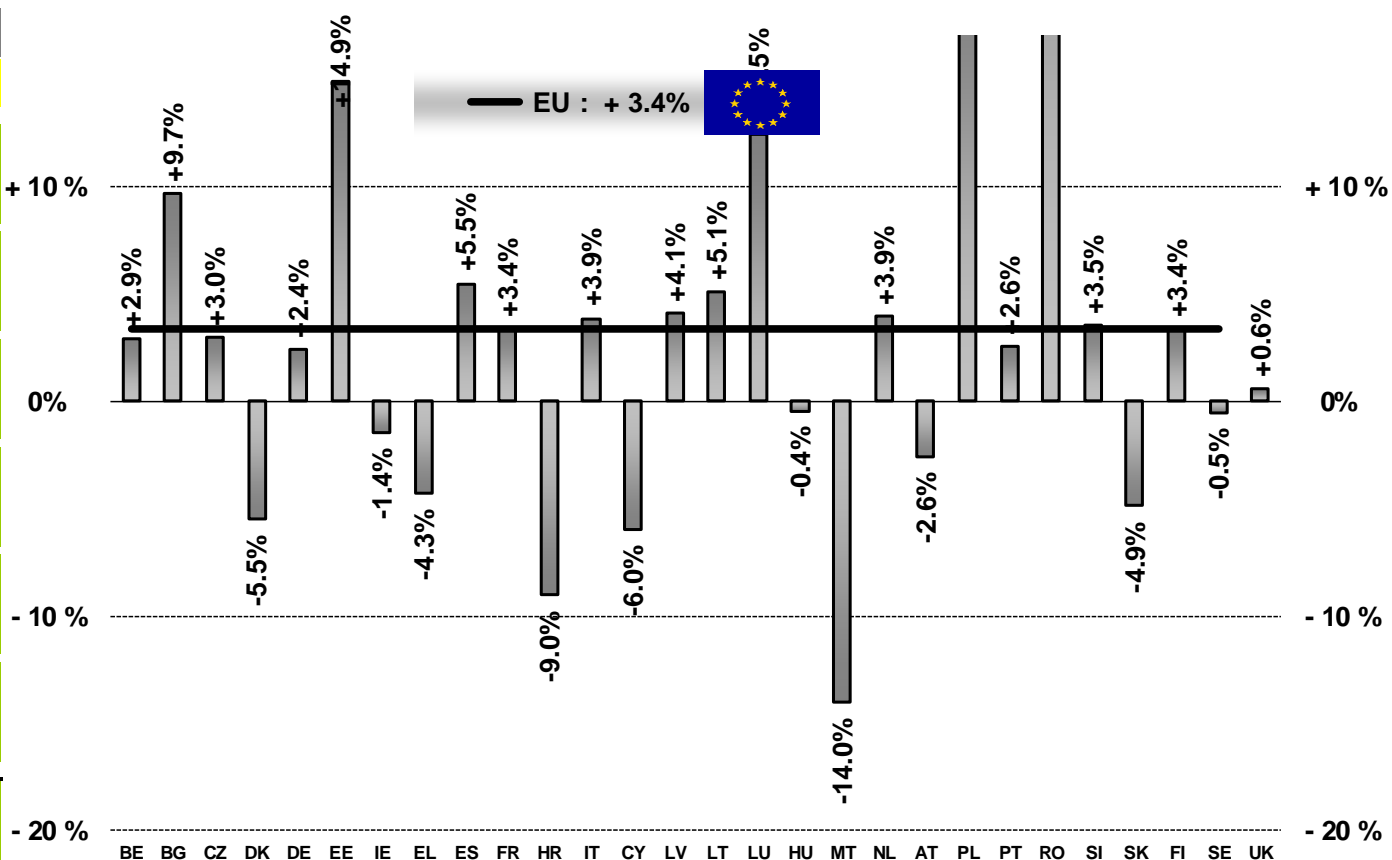
PRODUCTION

% EVOLUTION HEADS



European Commission

HEADS	Jan-Mar 14/15	
	EU15	EU28
Bull	-1.8%	+0.5%
Bullock	+9.0%	+9.0%
Cow	+3.1%	+4.8%
Heifer	+3.6%	+4.7%
Calve	+3.2%	+3.1%
Young cattle	+0.8%	+1.2%
Meat of bovine animals	+2.3%	+3.4%



Estimates for last month of period : CY AT

Source : EStat - Newcronos

25 June 2015

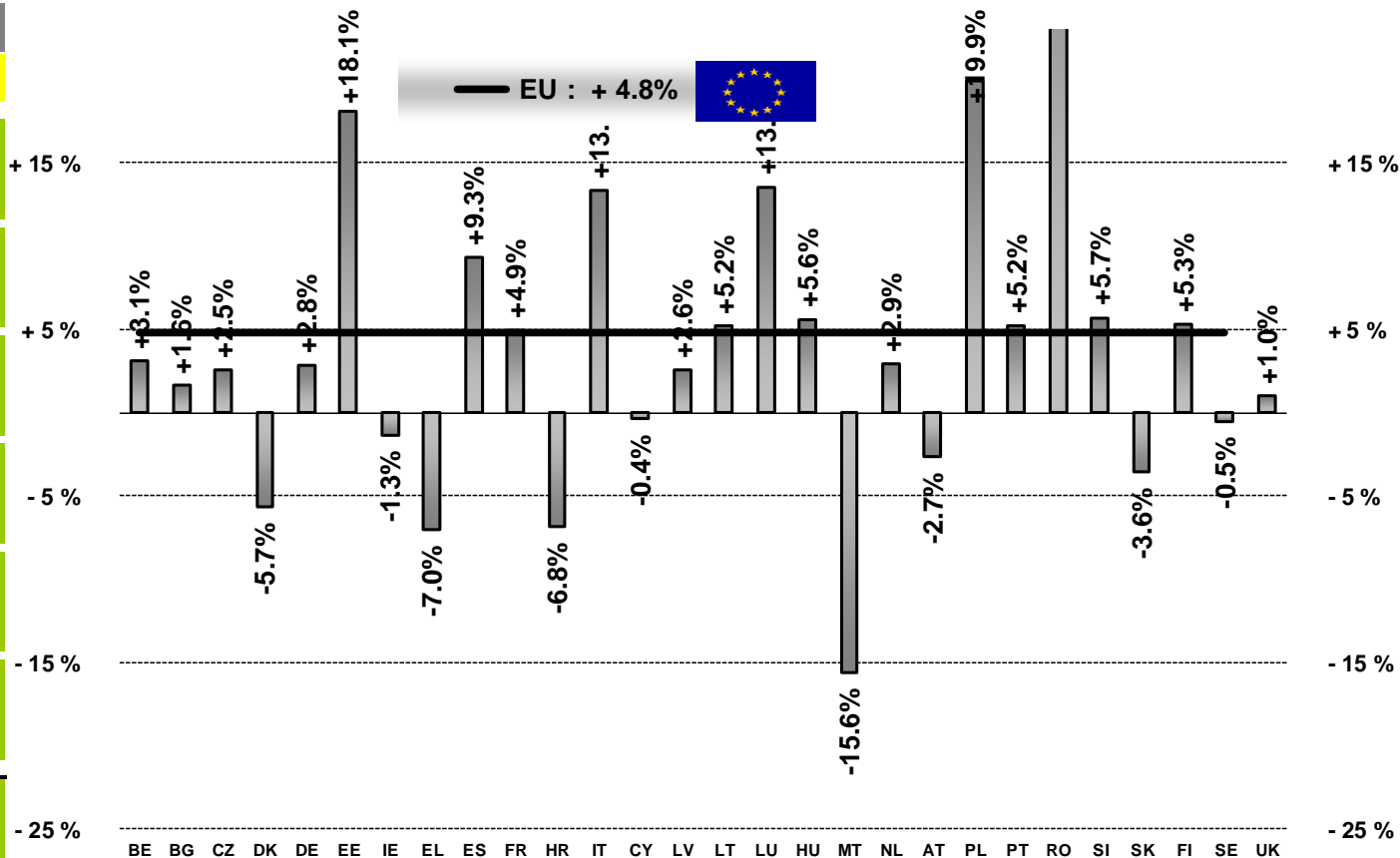
PRODUCTION

% EVOLUTION TONNES



European
Commission

TONNES	Jan-Mar 14/15	
	EU15	EU28
Bull	+0.4%	+2.0%
Bullock	+9.7%	+9.8%
Cow	+4.1%	+5.5%
Heifer	+5.6%	+6.3%
Calve	+5.8%	+5.7%
Young cattle	+2.8%	+3.2%
Meat of bovine animals	+3.9%	+4.8%



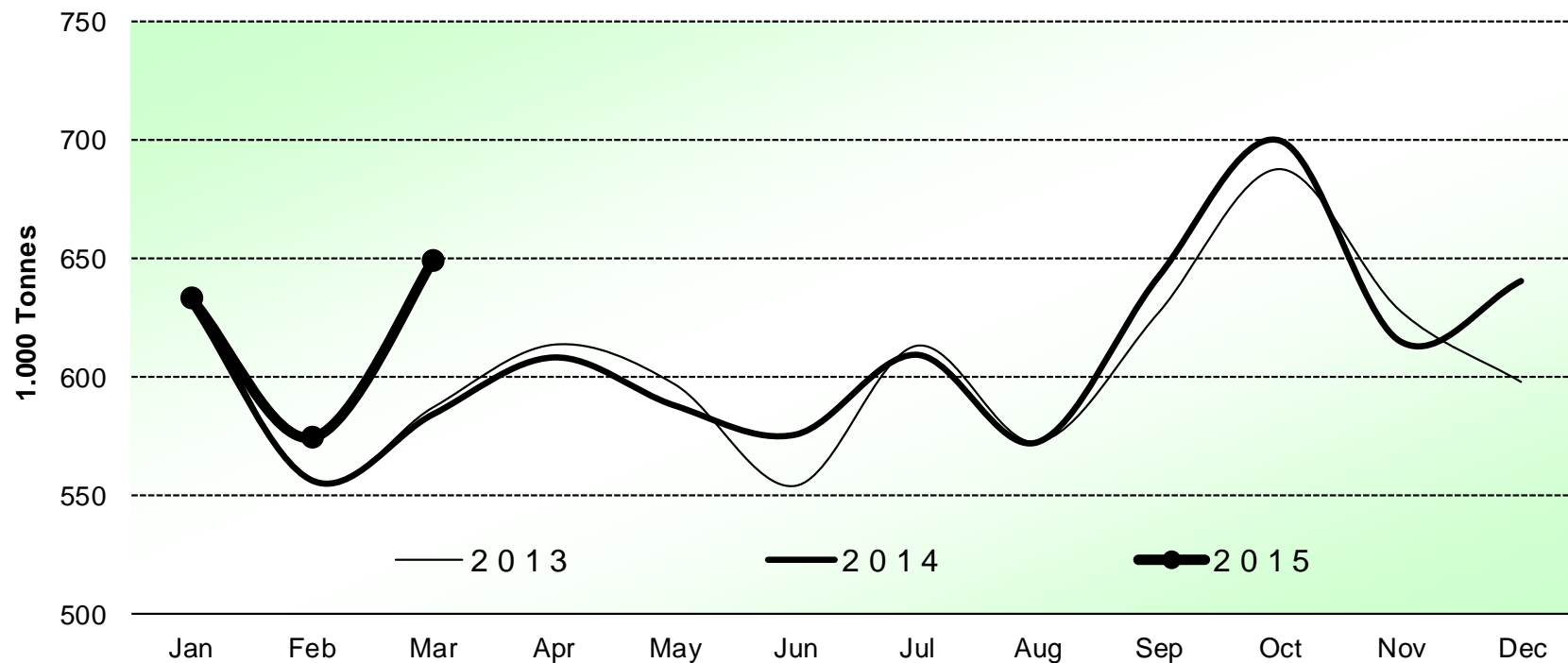
Estimates for last month of period : CY AT

Source : EStat - Newcronos

25 June 2015



Beef & Veal Production (E28 Slaughtering) - Tonnes



Source : EStat-Newcronos

25 June 2015

PRICES CARCASSES

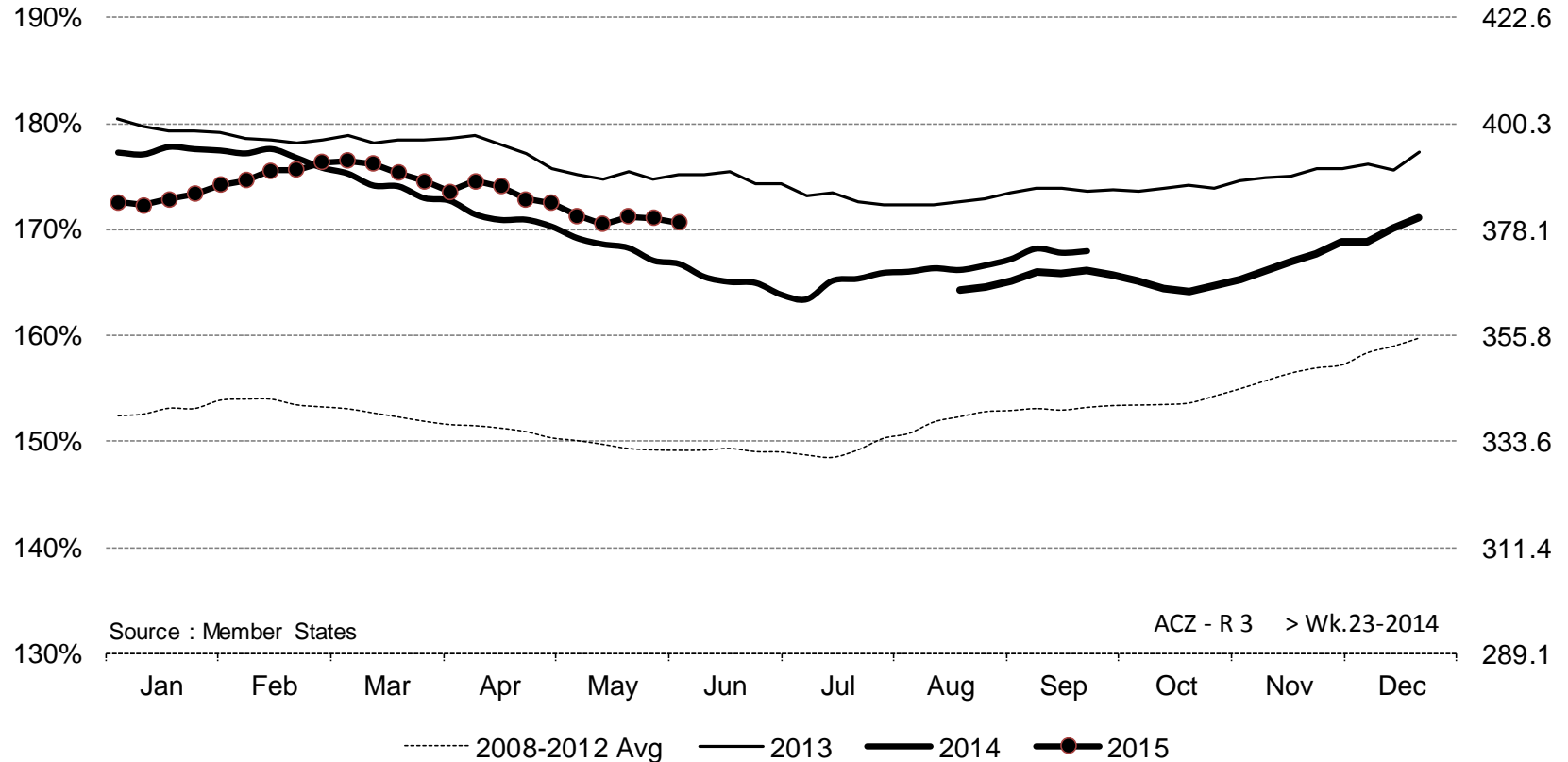
E.U. EVOLUTION
A/C/Z.R3



ACZ - R 3 > Wk.23-2014

% of Reference Price

€/100 kg cwe



Price in week 23 : **379.56**

% change y/y : **+ 2.3%**

% Ref. Price in wk 23 : **170.7%**

Average price in May 2015 : **380.81**

% change y/y : **+ 1.6%**

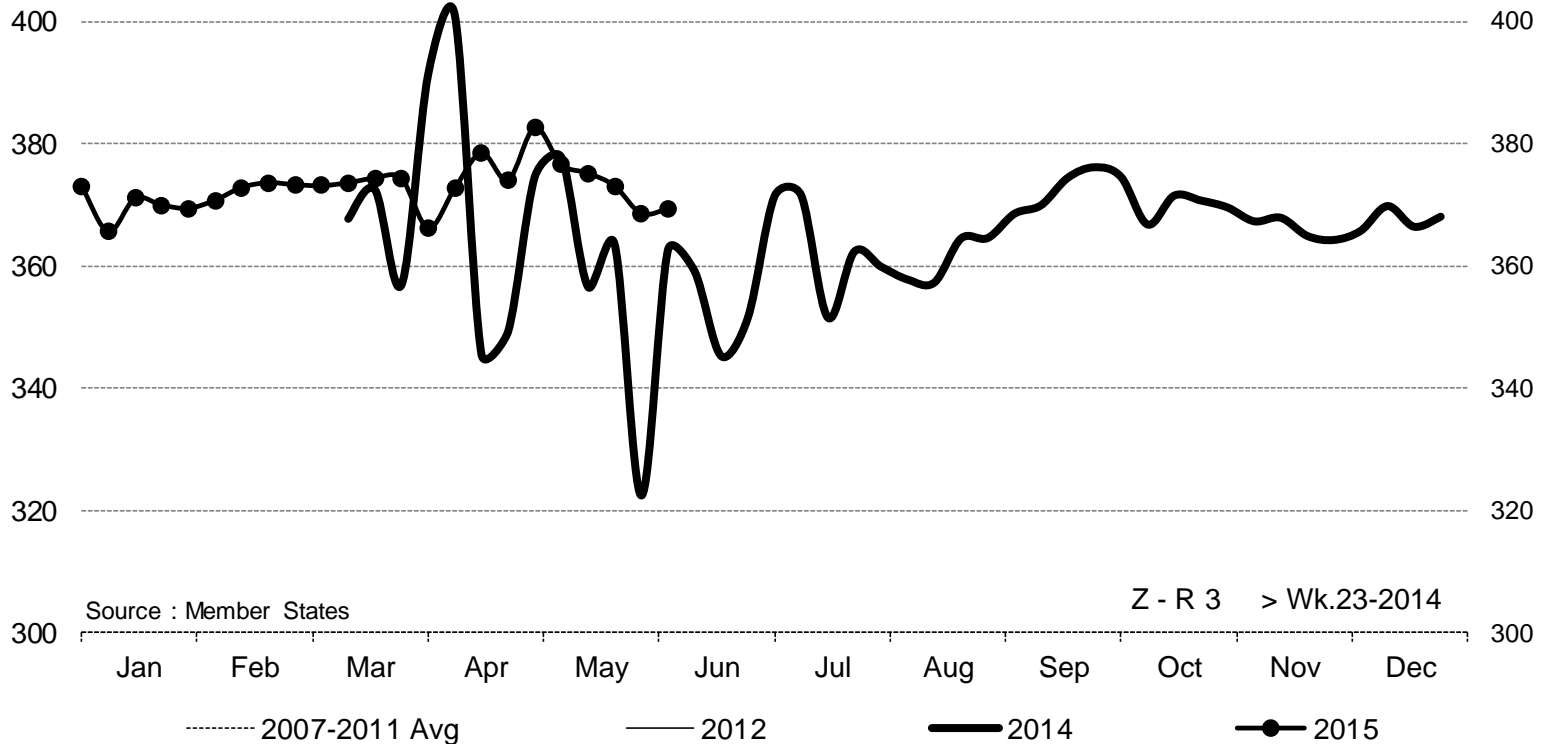
25 June 2015

PRICES CARCASSES



E.U. EVOLUTION YOUNG BOVINE 8-12M- Z.R3

Z - R 3 > Wk.23-2014



Price in week 23 : **369.49** Average price in May 2015 : **374.76**

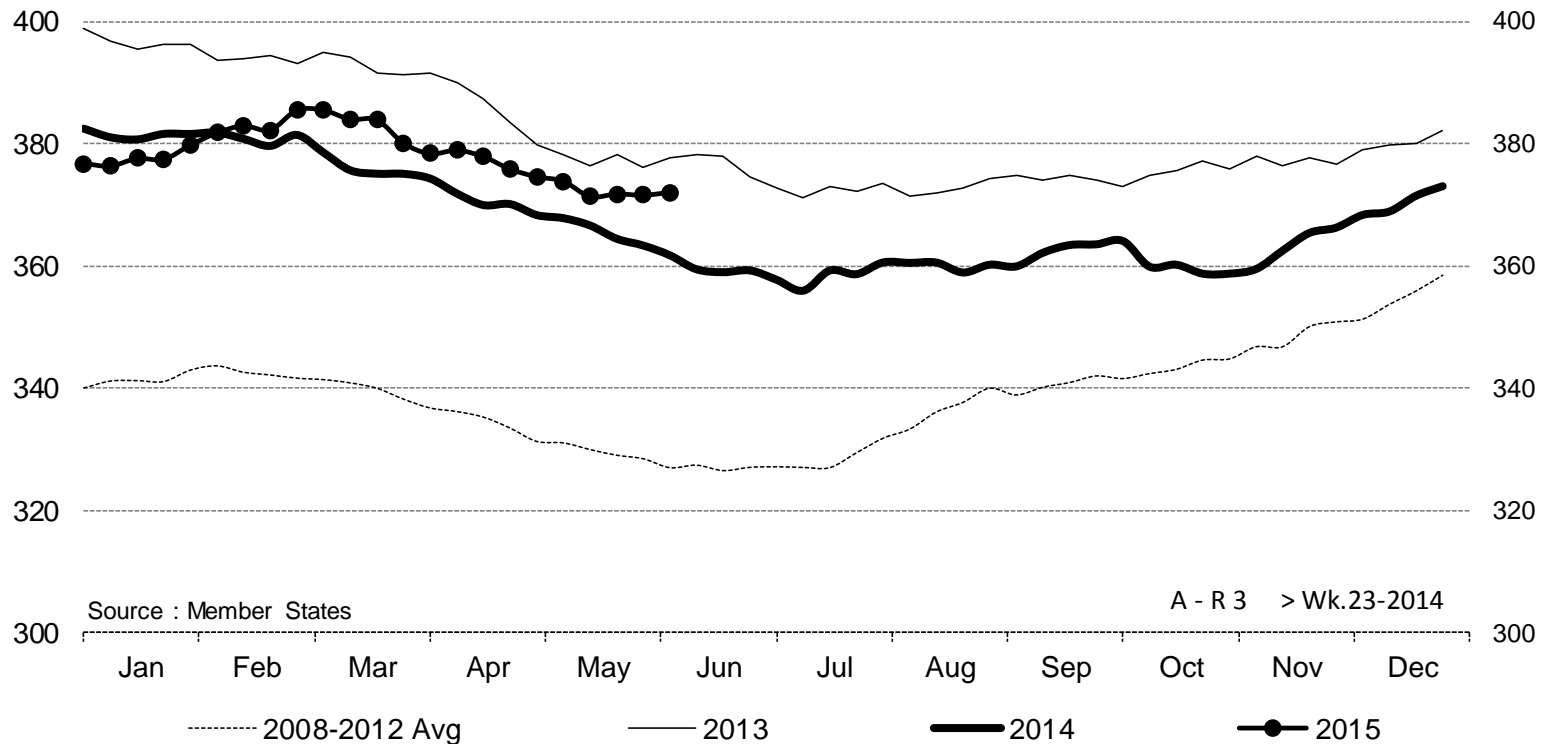
25 June 2015

PRICES CARCASSES

E.U. EVOLUTION YOUNG BULL - A.R3



A - R 3 > Wk.23-2014



Price in week 23 : 372.09	Average price in May 2015 : 372.52
% change y/y : + 2.8%	% change y/y : + 1.8%

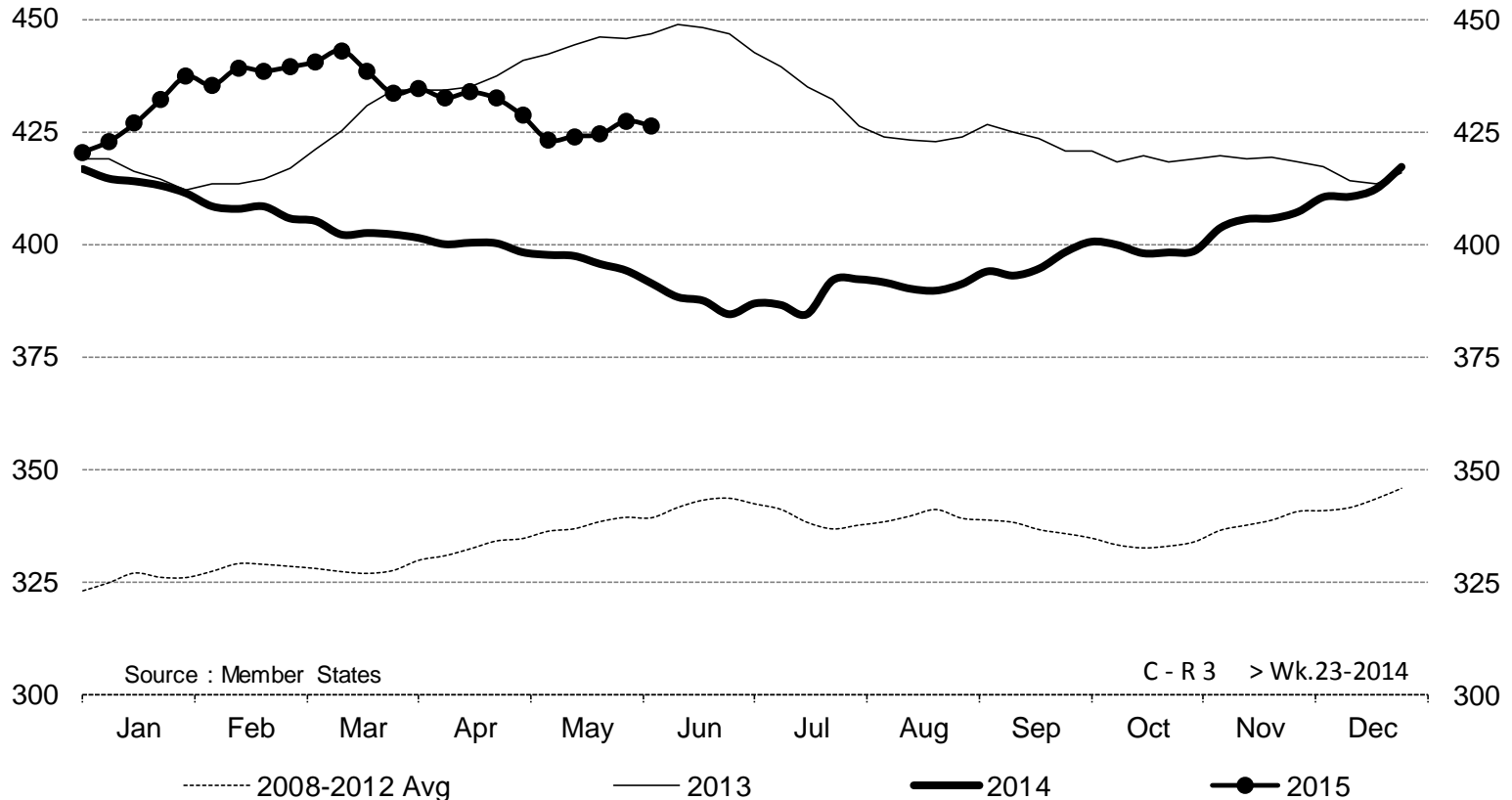
25 June 2015

PRICES CARCASSES

E.U. EVOLUTION STEER – C.R3



C - R 3 > Wk.23-2014



Price in week 23 :	426.26	Average price in May 2015 :	425.14
% change y/y :	+ 8.9%	% change y/y :	+ 7.2%

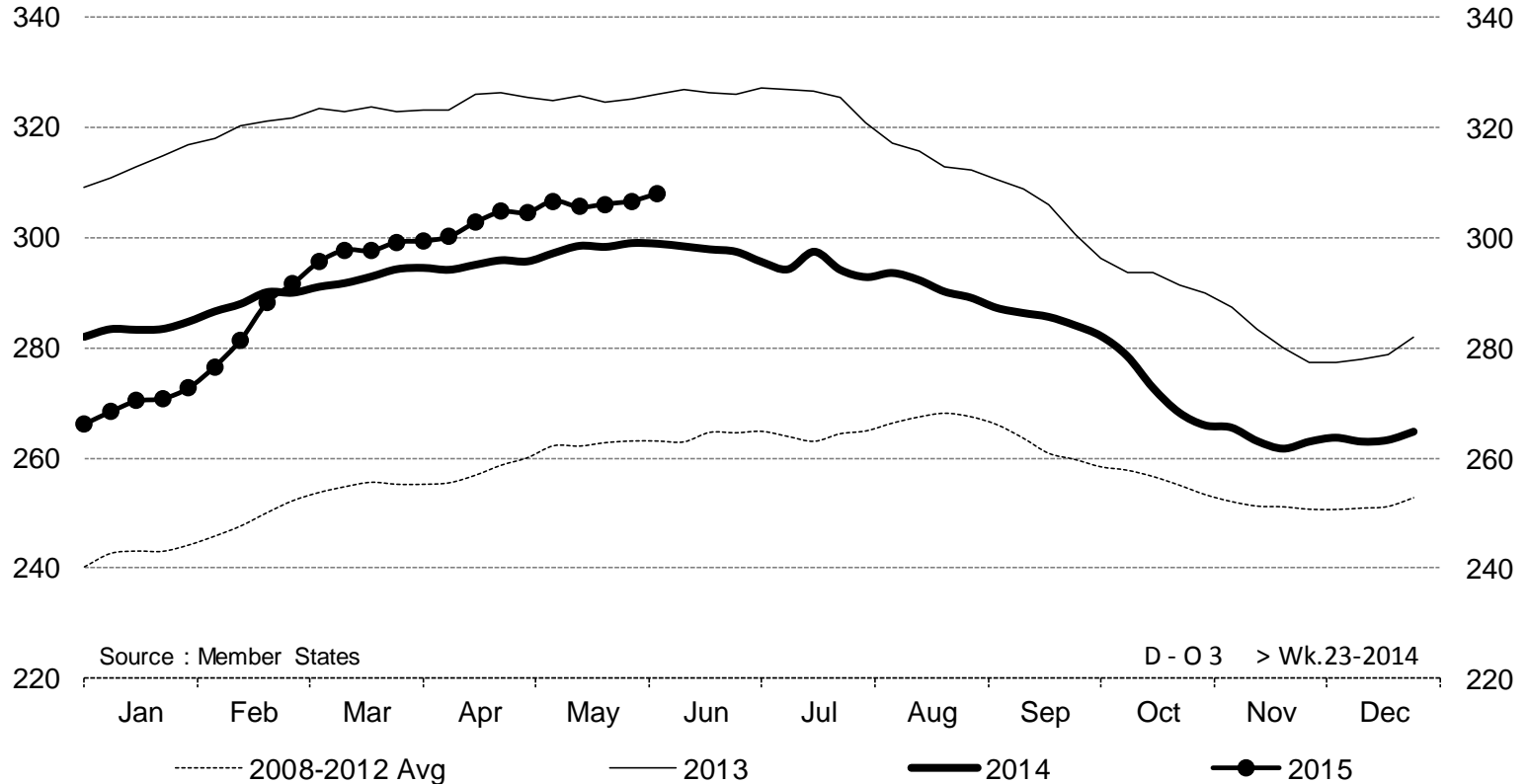
25 June 2015

PRICES CARCASSES

E.U. EVOLUTION COW – D.03



D - O 3 > Wk.23-2014



Price in week 23 :	308.08	Average price in May 2015 :	306.06
% change y/y :	+ 3.1%	% change y/y :	+ 2.7%

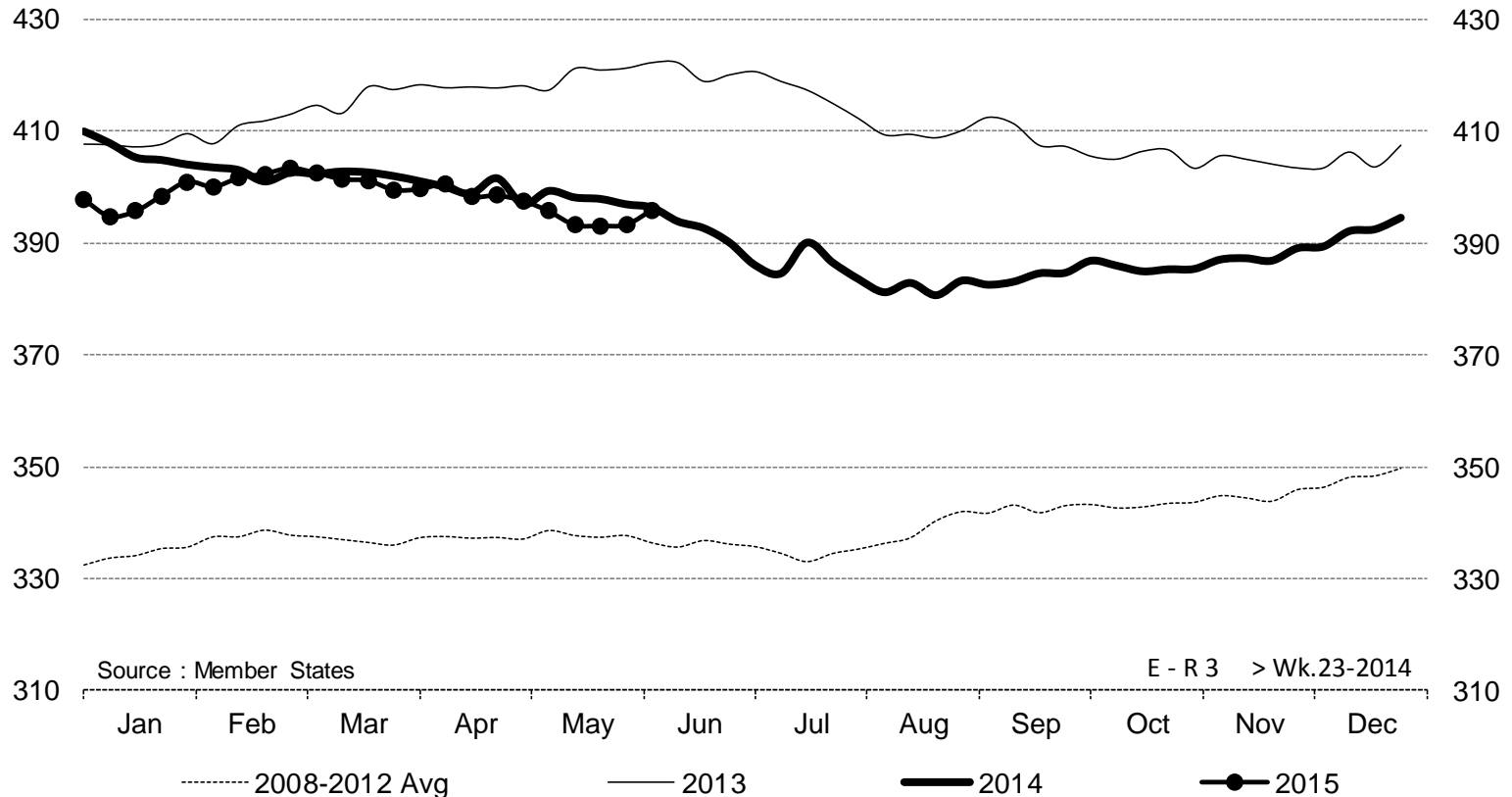
25 June 2015

PRICES CARCASSES

E.U. EVOLUTION HEIFER - E.R3



E - R 3 > Wk.23-2014

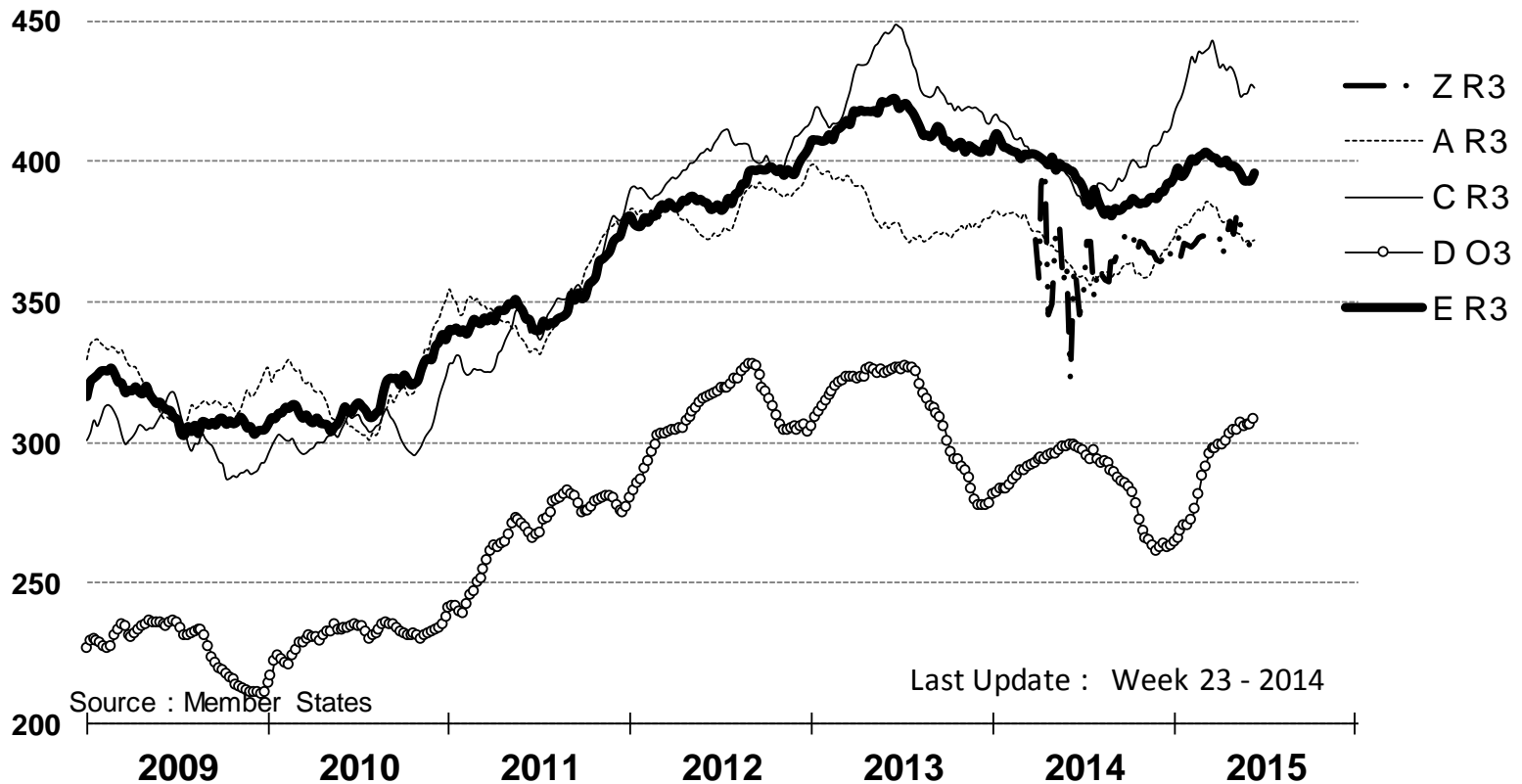


25 June 2015

PRICES CARCASSES



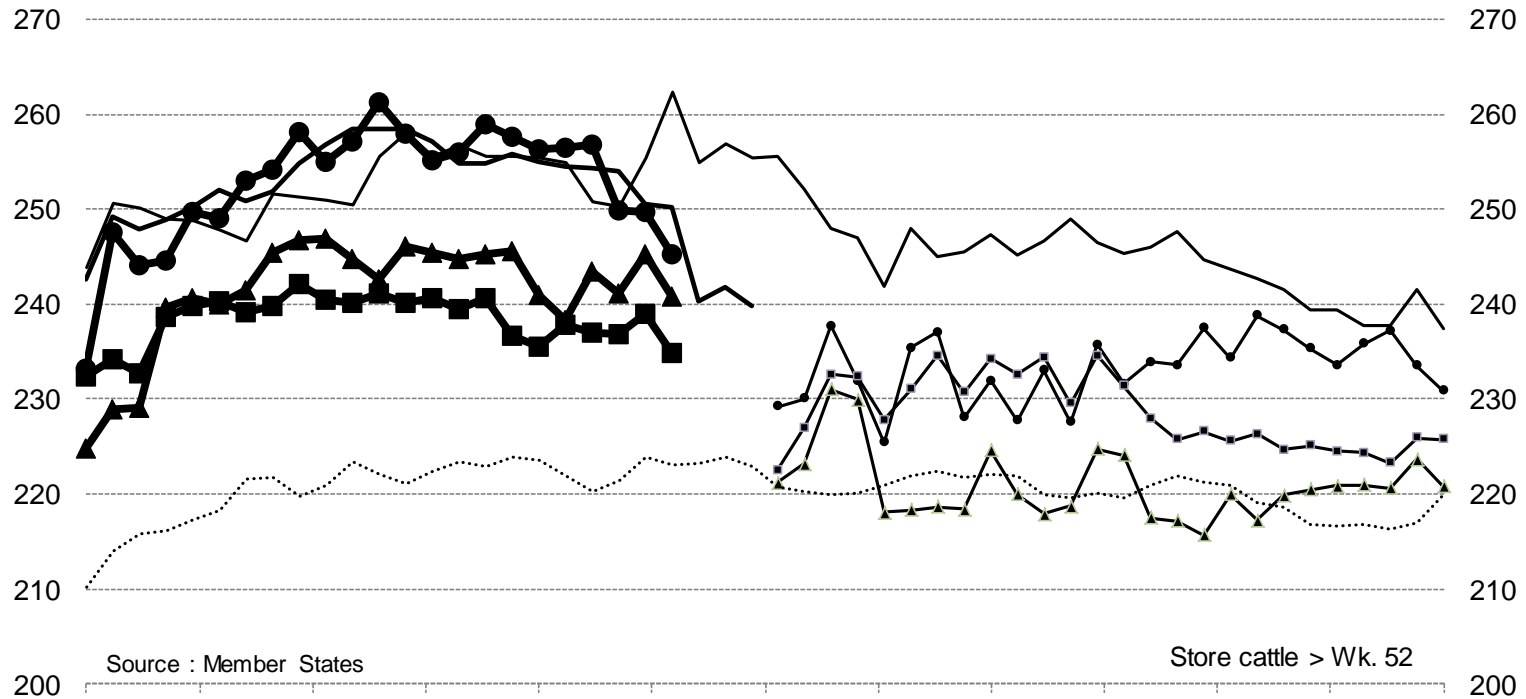
E.U. EVOLUTION All CAT GLOBAL VIEW



25 June 2015



Store cattle (€/100 kg live weight)



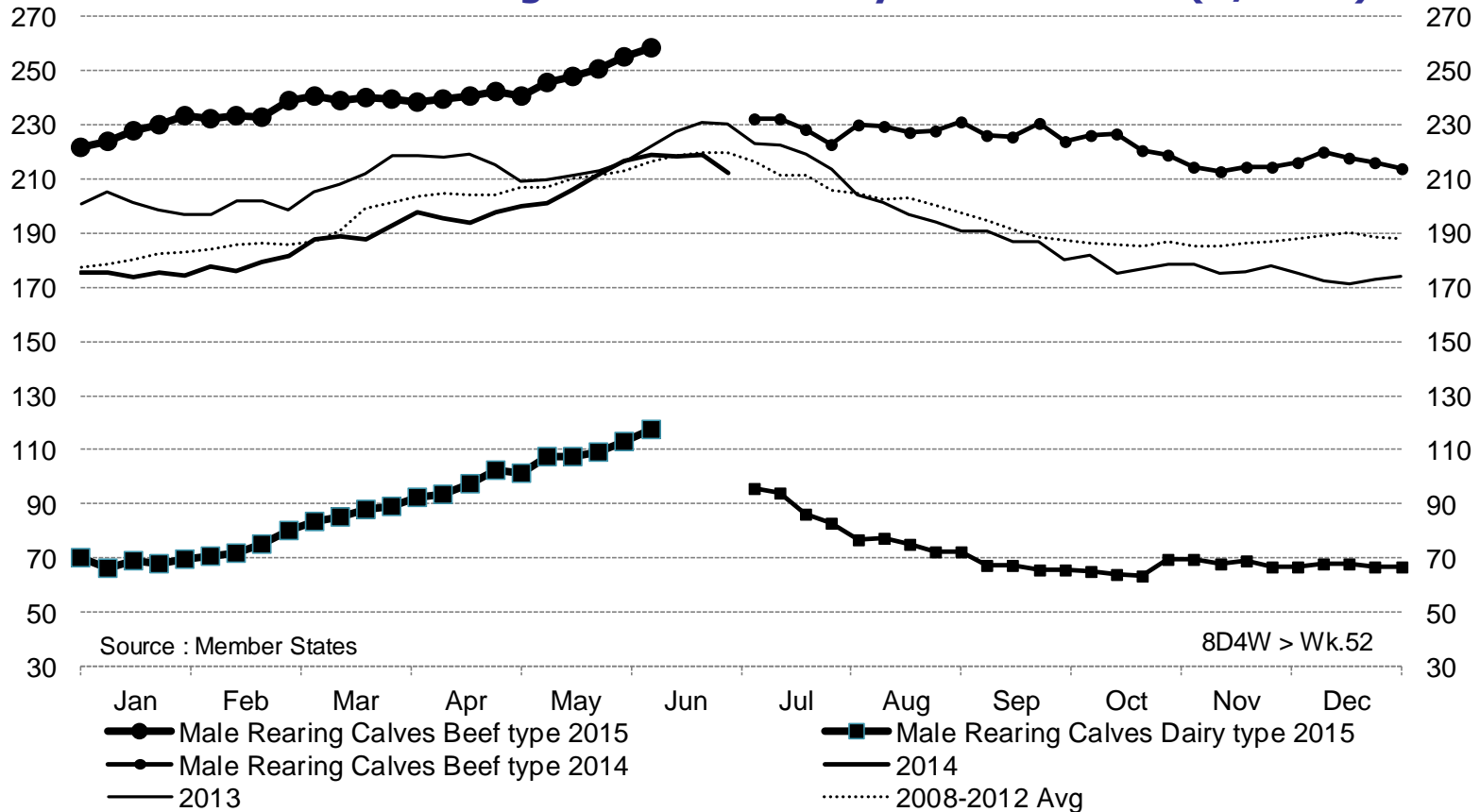
Source : Member States

● Young Store Cattle 2015 ▲ Yearling Male Store Cattle 2015 ■ Yearling Female Store Cattle 2015
○ Young Store Cattle 2014 △ Yearling Male Store Cattle 2014 □ Yearling Female Store Cattle 2014
— 2013 — 2014 ⋯ 2008-2012 Avg

Young Store Cattle Price in	Week 23	2.45	Yearling Male Store Cattle Price in	Week 23	2.41
Yearling Female Store Cattle Price in	Week 23	2.35	€/kg live weight		



Male calves aged between 8 days and 4 weeks (€/head)

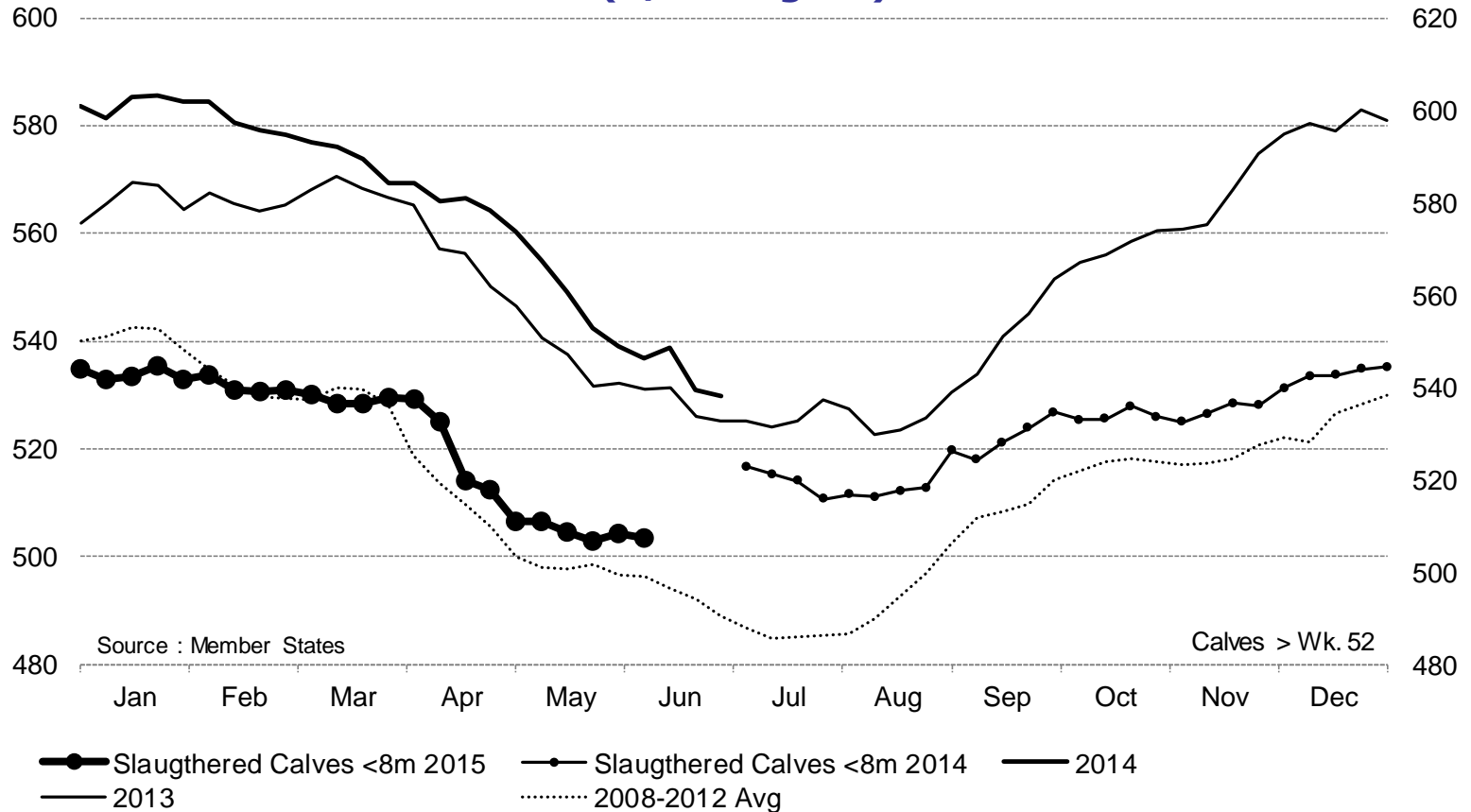


Male Rearing Calves Beef type Price in Week 23 258.50 Male Rearing Calves Dairy type Price in Week 23 117.48

25 June 2015



Calves slaughtered before the age of less than 8 months (€/100 kg cw)



Price in Week 23 **507.49** € / 100 kg of carcasse weight

25 June 2015



European
Commission

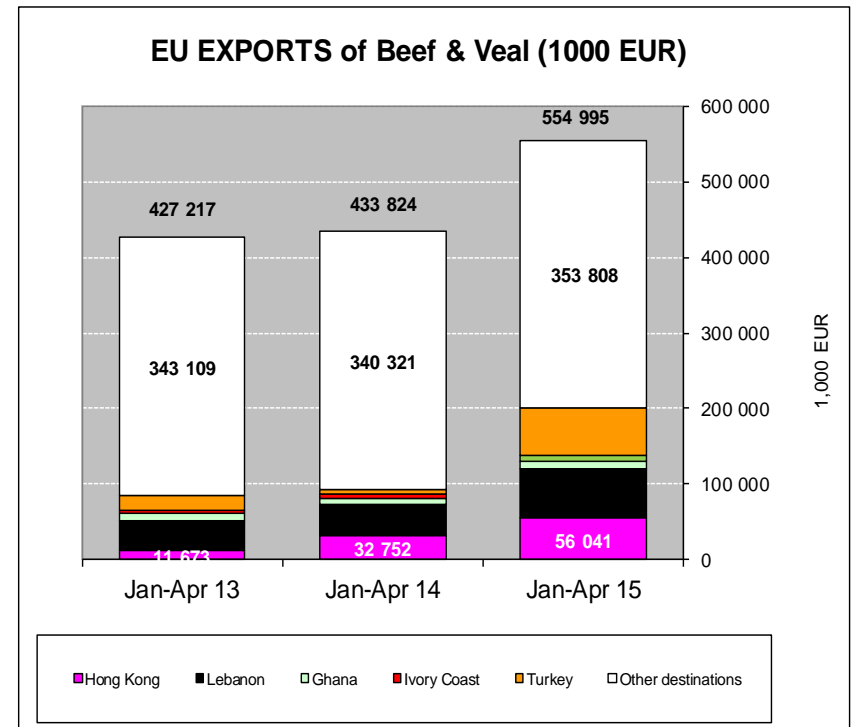
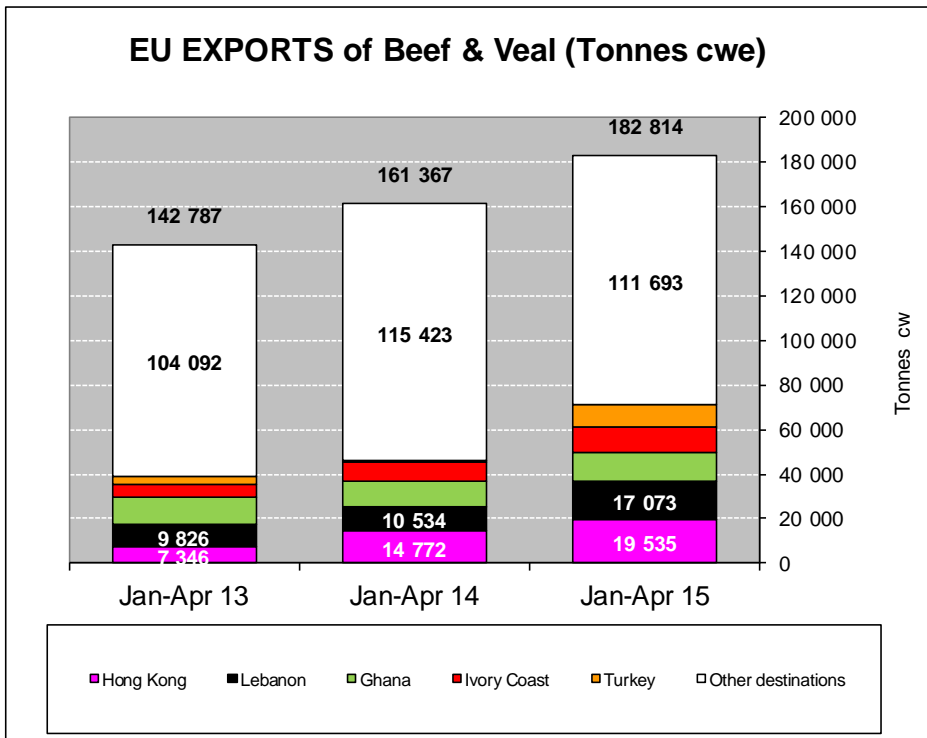
EU exports of beef and live animals (1): Trade figures (COMEXT – tonnes cwe)

Destinations	2011		2012		2013		2014		Jan-Apr 15		Compared to Jan-Apr 14
	tonnes	%	tonnes	%	tonnes	%	tonnes	%	tonnes	%	
Hong Kong	19 449	3.1%	17 894	3.5%	28 540	6.3%	64 963	11.6%	19 535	10.7%	+ 32.2%
Lebanon	25 199	4.0%	27 473	5.4%	26 323	5.8%	37 977	6.8%	17 073	9.3%	+ 62.1%
Ghana	21 979	3.5%	28 693	5.6%	40 878	9.0%	33 287	6.0%	12 875	7.0%	+ 13.8%
Ivory Coast	18 177	2.9%	15 929	3.1%	21 619	4.8%	28 839	5.2%	11 775	6.4%	+ 38.4%
Bosnia-Herz.	21 421	3.4%	19 714	3.9%	26 814	5.9%	34 135	6.1%	10 631	5.8%	+ 6.8%
Turkey	166 774	26.7%	101 475	20.0%	5 086	1.1%	8 118	1.5%	9 863	5.4%	+++
Switzerland	26 718	4.3%	19 911	3.9%	26 526	5.8%	26 636	4.8%	9 523	5.2%	+ 10.8%
Norway	7 116	1.1%	14 620	2.9%	10 222	2.3%	7 899	1.4%	7 813	4.3%	+++
Algeria	17 971	2.9%	17 323	3.4%	25 930	5.7%	18 544	3.3%	6 428	3.5%	- 8.4%
Israel	8 719	1.4%	8 436	1.7%	9 378	2.1%	8 353	1.5%	4 338	2.4%	+ 48.0%
Libya	2 473	0.4%	11 974	2.4%	18 675	4.1%	14 280	2.6%	4 280	2.3%	- 32.0%
Philippines	2 902	0.5%	2 028	0.4%	2 730	0.6%	11 867	2.1%	4 100	2.2%	+ 199.2%
For.JRep.Mac	13 244	2.1%	11 446	2.3%	10 630	2.3%	11 373	2.0%	3 511	1.9%	+ 10.5%
Cuba	723	0.1%	1 098	0.2%	2 292	0.5%	4 455	0.8%	3 257	1.8%	+ 10.0%
Kosovo	5 636	0.9%	4 068	0.8%	5 180	1.1%	7 936	1.4%	3 047	1.7%	+ 73.0%
Russia	138 908	22.3%	97 828	19.2%	72 281	15.9%	96 817	17.3%	2 299	1.3%	- 93.1%
Other Destinations	126 703	20.3%	108 565	21.4%	120 601	26.6%	143 839	25.7%	52 466	28.7%	
EXTRA EU	624 111		508 473		453 705		559 321		182 814		
% change			- 19%		- 11%		+ 23%		+ 13.3%		

25 June 2015

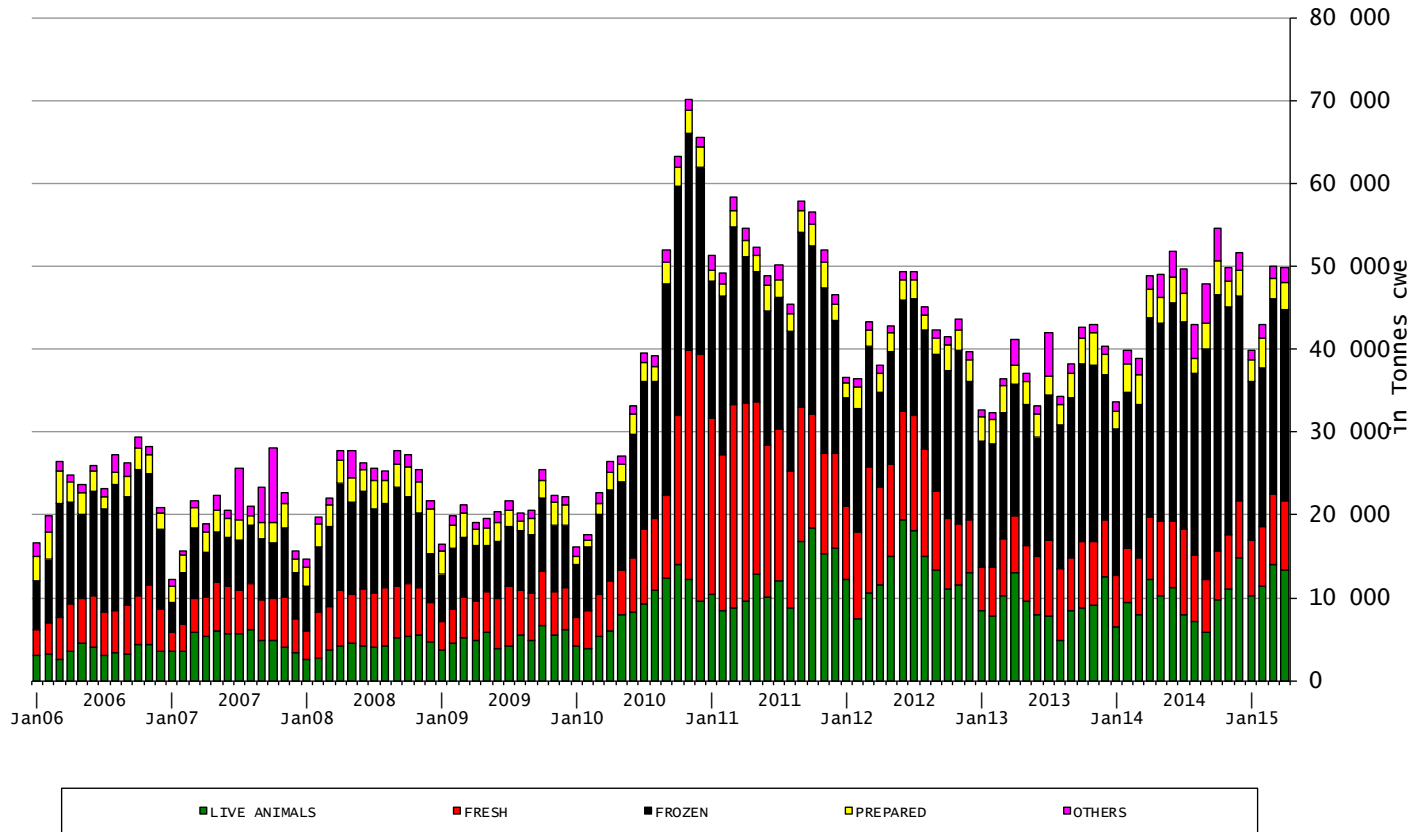


EU exports of beef and live animals: Trade figures (COMEXT)





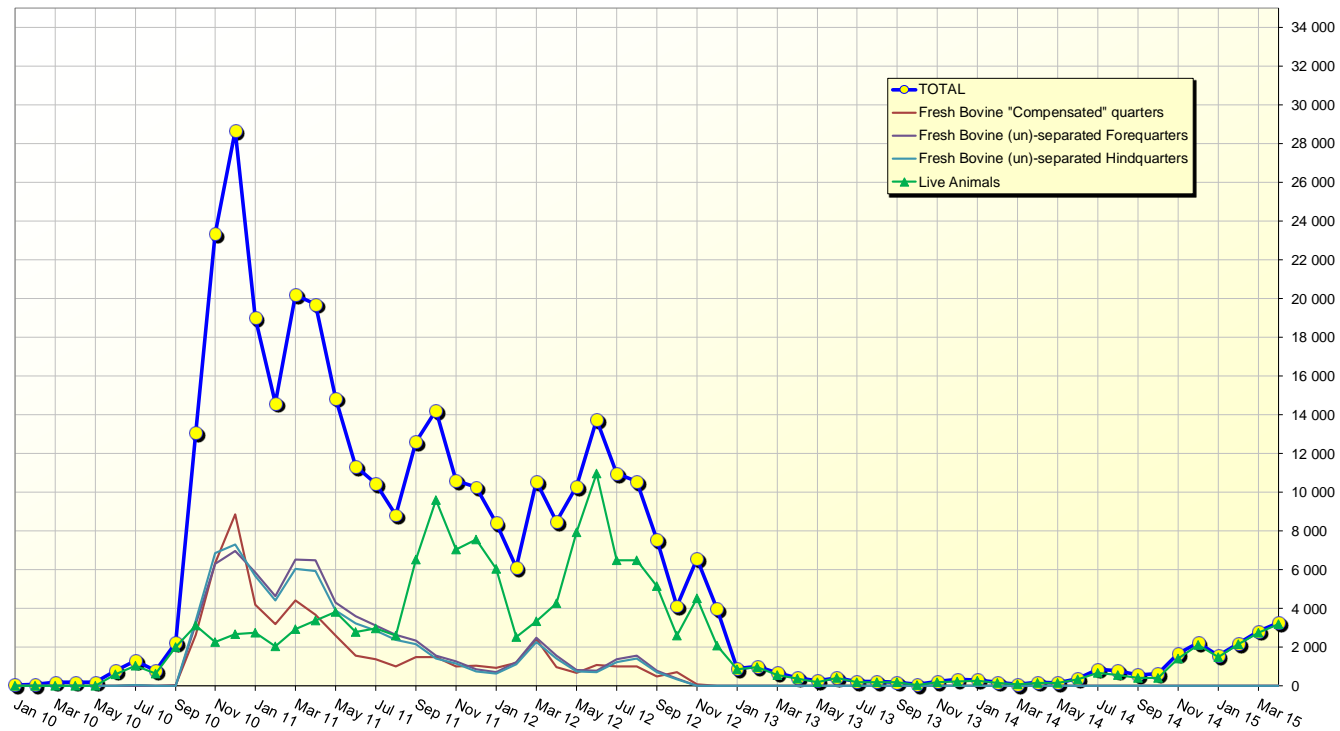
EU-28 Exports of BEEF products



25 June 2015



EU beef Exports to TURKEY Trade figures (COMEXT data) *tonnes cwe*

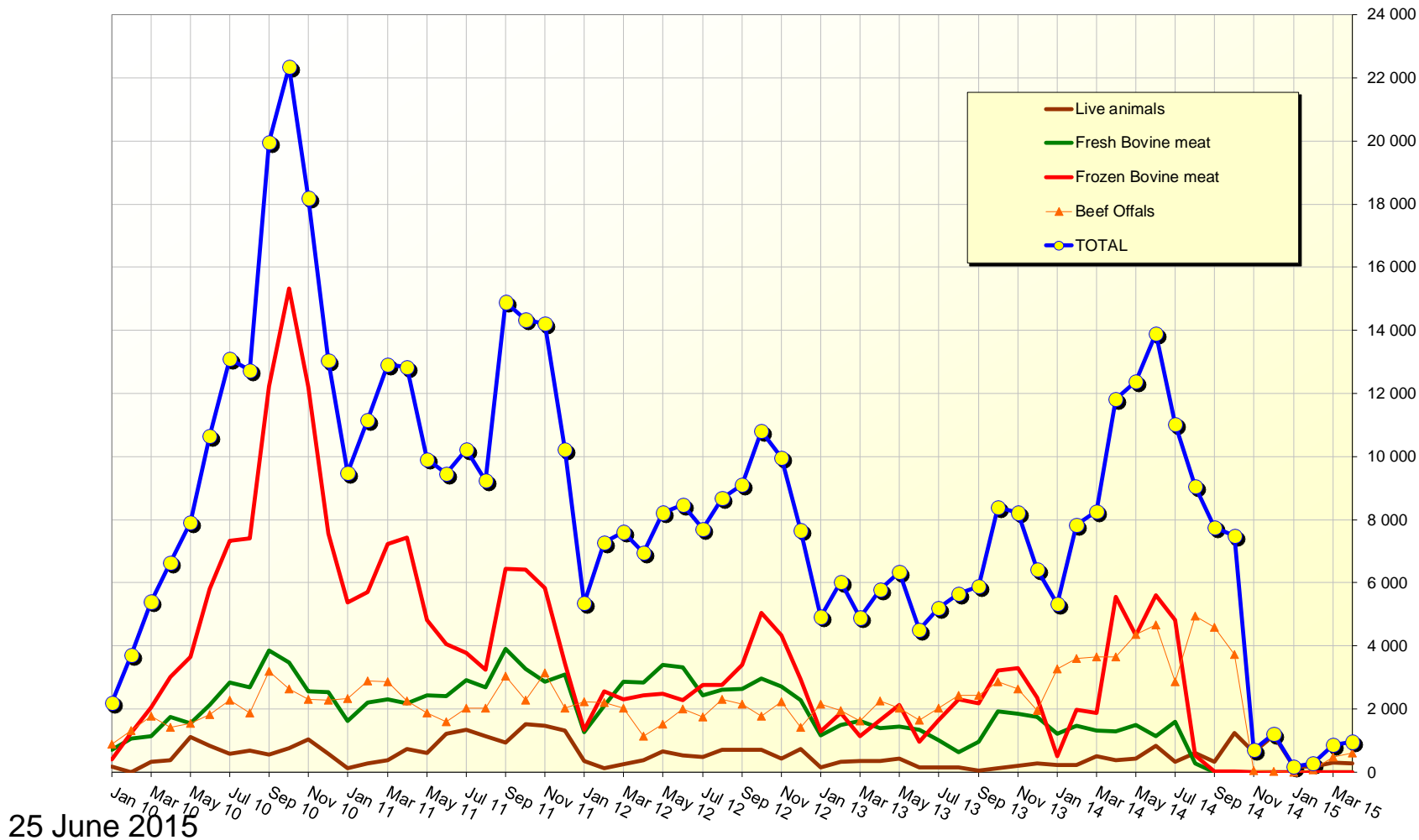


25 June 2015



European
Commission

EU beef Exports to RUSSIA Trade figures (COMEXT data) tonnes cwe



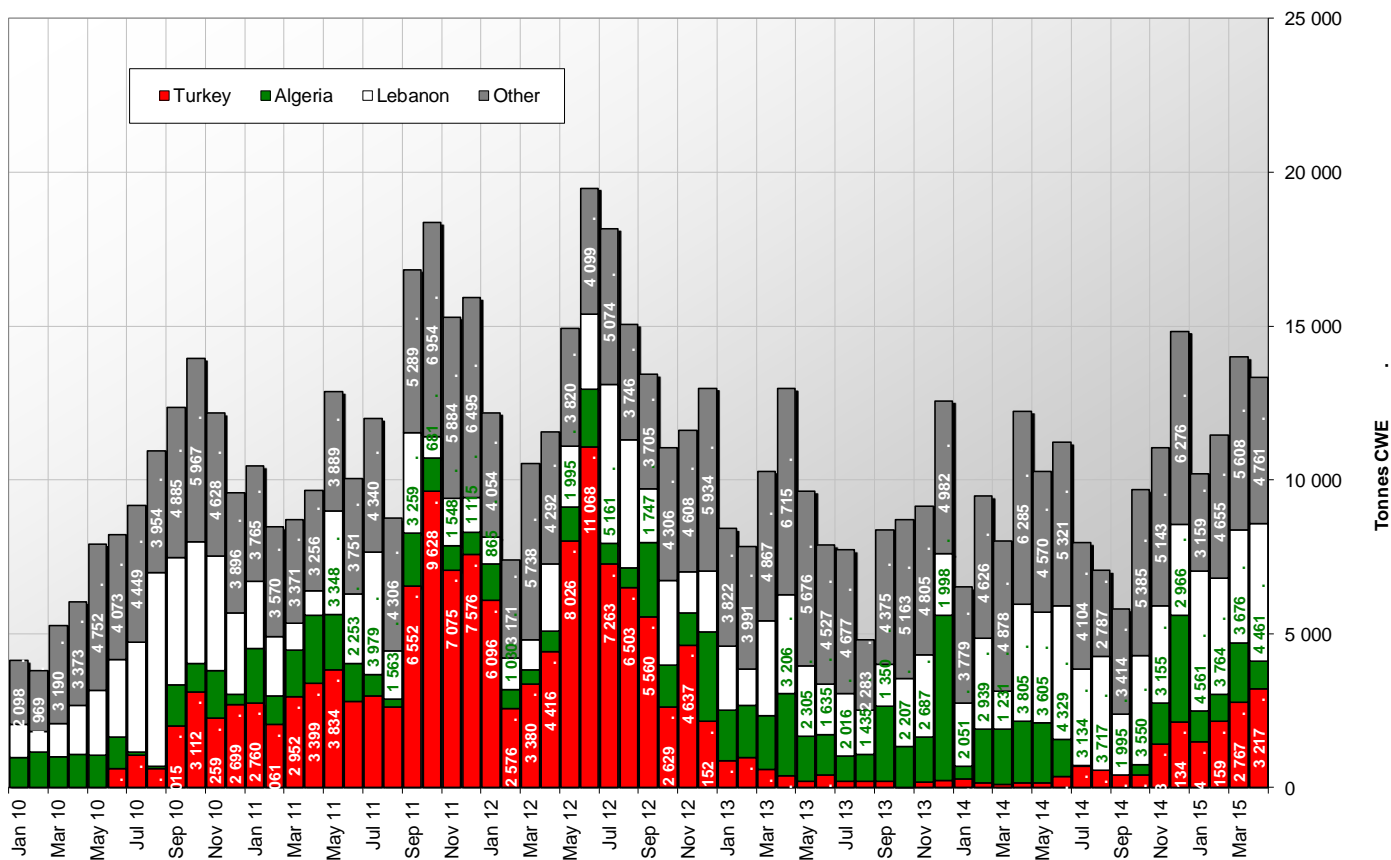
25 June 2015



European
Commission

EU-28 Exports of LIVE Bovine Animals

(Source COMEXT - Tonnes cwe)



25 June 2015



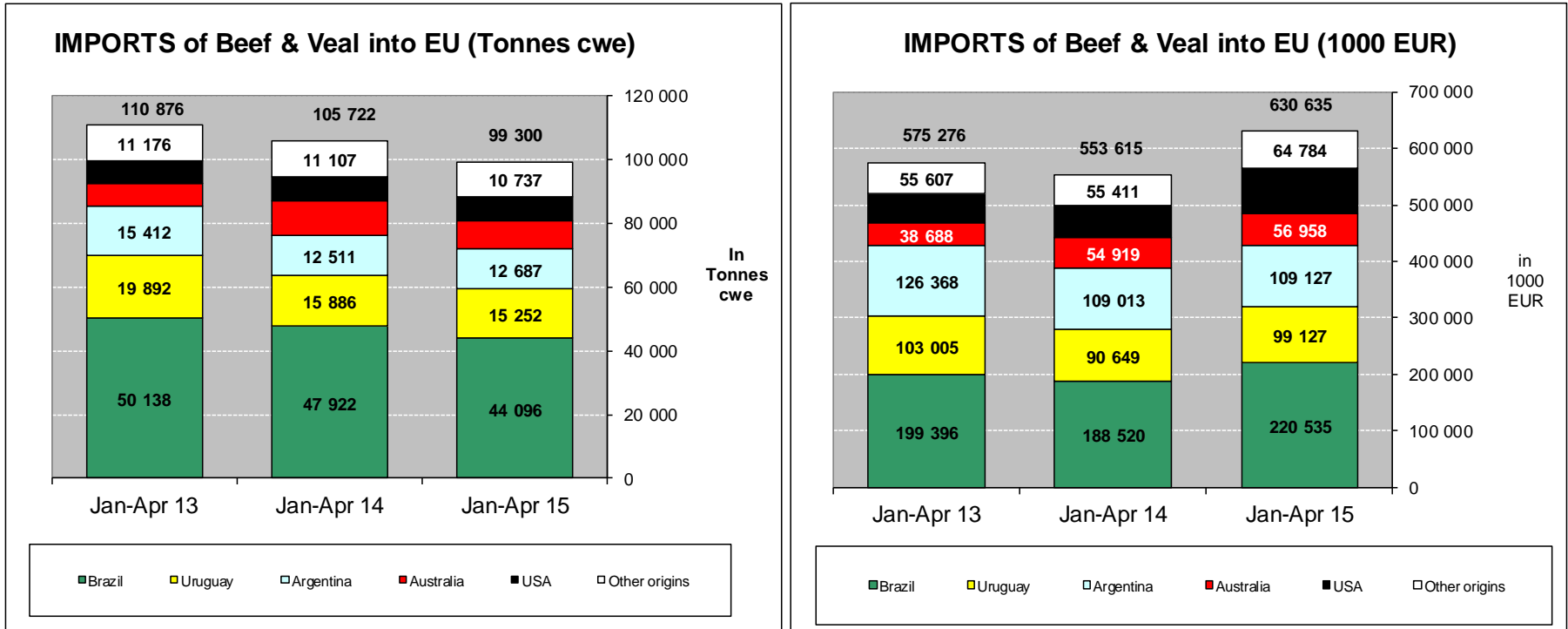
EU imports of beef and live animals (1): Trade figures (COMEXT – tonnes cwe)

Origins	2011		2012		2013		2014		Jan-Apr 15		Compared to Jan-Apr 14
	tonnes	%	tonnes	%	tonnes	%	tonnes	%	tonnes	%	
Brazil	126 143	39.1%	126 926	41.3%	146 038	43.6%	143 976	43.4%	44 096	44.4%	- 8.0%
Uruguay	51 936	16.1%	52 580	17.1%	51 641	15.4%	48 719	14.7%	15 252	15.4%	- 4.0%
Argentina	62 704	19.4%	51 696	16.8%	47 977	14.3%	42 010	12.7%	12 687	12.8%	+ 1.4%
Australia	18 277	5.7%	21 311	6.9%	28 106	8.4%	32 679	9.9%	8 726	8.8%	- 19.4%
USA	23 000	7.1%	21 097	6.9%	22 300	6.7%	23 286	7.0%	7 802	7.9%	+ 4.5%
New Zealand	15 472	4.8%	15 376	5.0%	13 958	4.2%	14 382	4.3%	3 643	3.7%	- 30.4%
Botswana	980	0.3%	474	0.2%	6 280	1.9%	6 490	2.0%	2 476	2.5%	+++
Namibia	9 004	2.8%	8 848	2.9%	11 113	3.3%	9 918	3.0%	2 006	2.0%	- 3.4%
Switzerland	5 661	1.8%	4 949	1.6%	4 287	1.3%	5 456	1.6%	1 662	1.7%	- 8.5%
Chile	2 254	0.7%	1 711	0.6%	537	0.2%	875	0.3%	245	0.2%	+ 144.4%
Norway	264	0.1%	151	0.0%	201	0.1%	347	0.1%	204	0.2%	+ 47.8%
Canada	917	0.3%	825	0.3%	965	0.3%	780	0.2%	176	0.2%	- 41.6%
Serbia	793	0.2%	742	0.2%	619	0.2%	425	0.1%	144	0.1%	- 8.3%
Japan	0	0.0%	0	0.0%	3	0.0%	100	0.0%	62	0.1%	+++
Russia	100	0.0%	72	0.0%	150	0.0%	941	0.3%	52	0.1%	- 23.4%
Swaziland	51	0.0%	52	0.0%	66	0.0%	71	0.0%	30	0.0%	- 7.3%
Algeria									21	0.0%	+++
Other Origins	4 968	1.5%	578	0.2%	362	0.1%	1 123	0.3%	16	0.0%	
EXTRA EU	322 522		307 388		334 604		331 579		99 300		
% change			- 5%		+ 9%		- 1%		- 6.1%		

25 June 2015

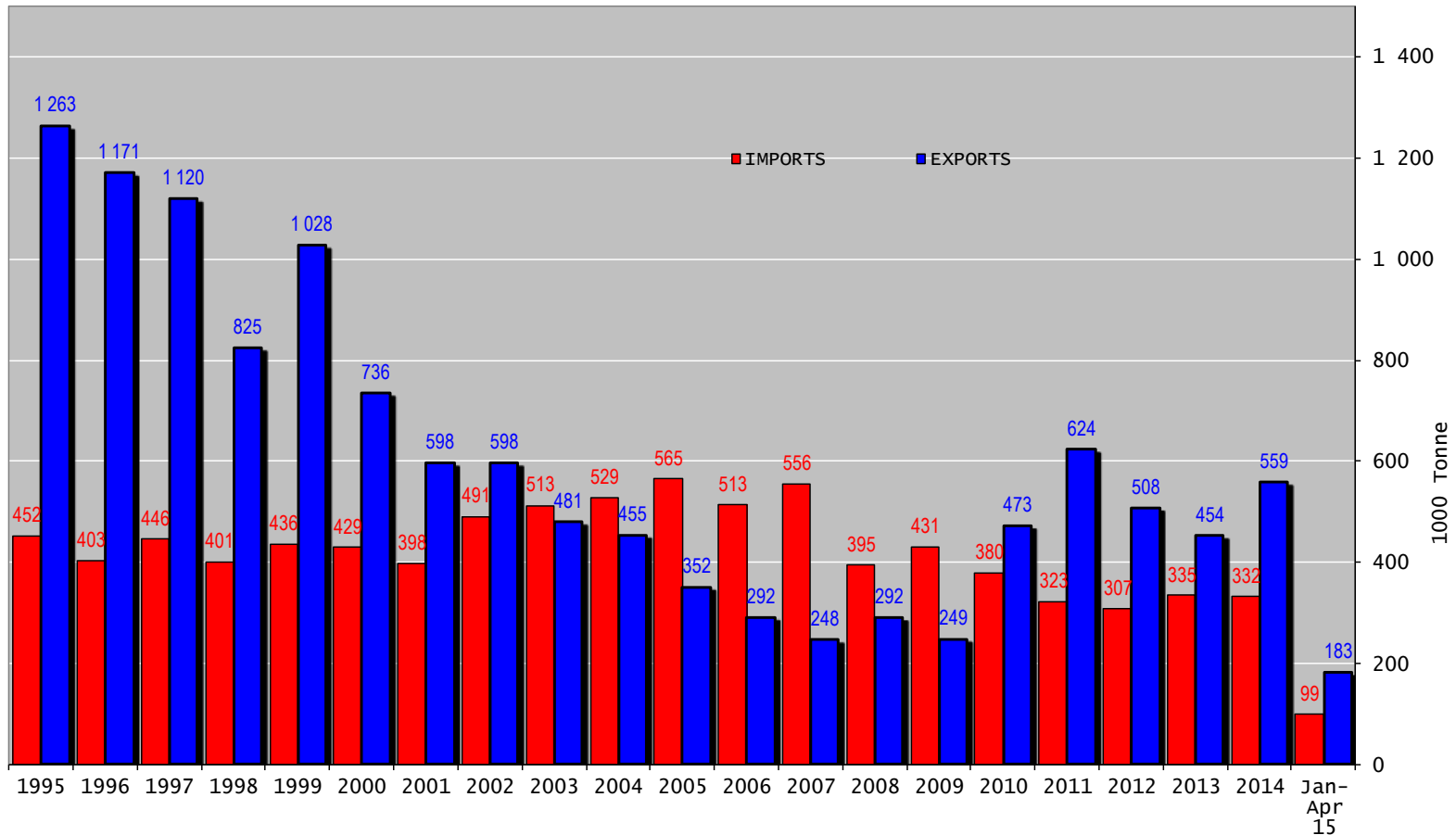


EU imports of beef and live animals (2): Trade figures (COMEXT)





Trade balance of beef and live animals

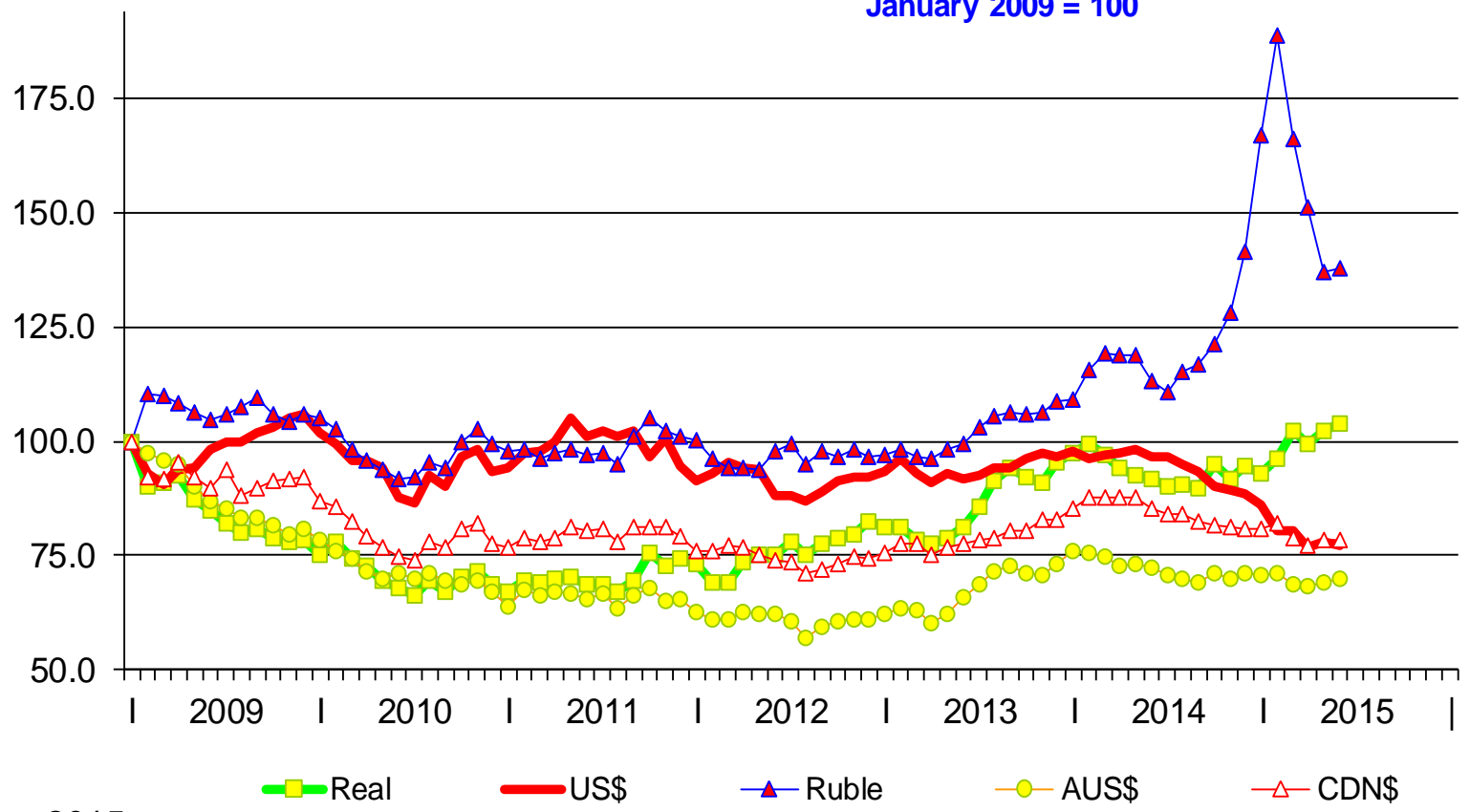


25 June 2015



Index of monthly exchange rates of the main trading partners compared to the €uro

notification on the 1st of the month
January 2009 = 100



25 June 2015

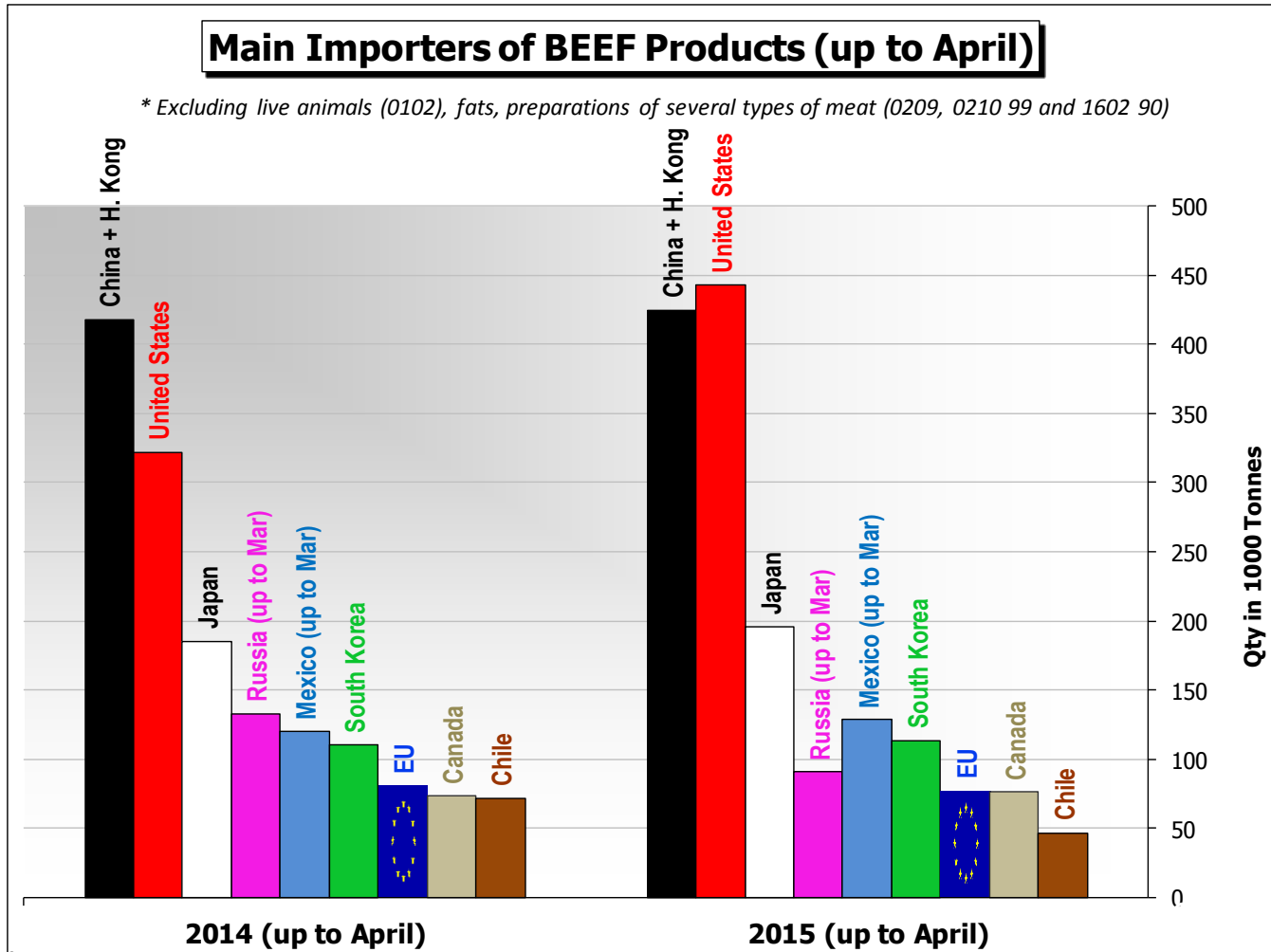


Source : GTA

* Excluding live animals (0102), fats, preparations of several types of meat (0209, 0210 99 and 1602 90)

Main Importers of BEEF Products (up to April)

* Excluding live animals (0102), fats, preparations of several types of meat (0209, 0210 99 and 1602 90)



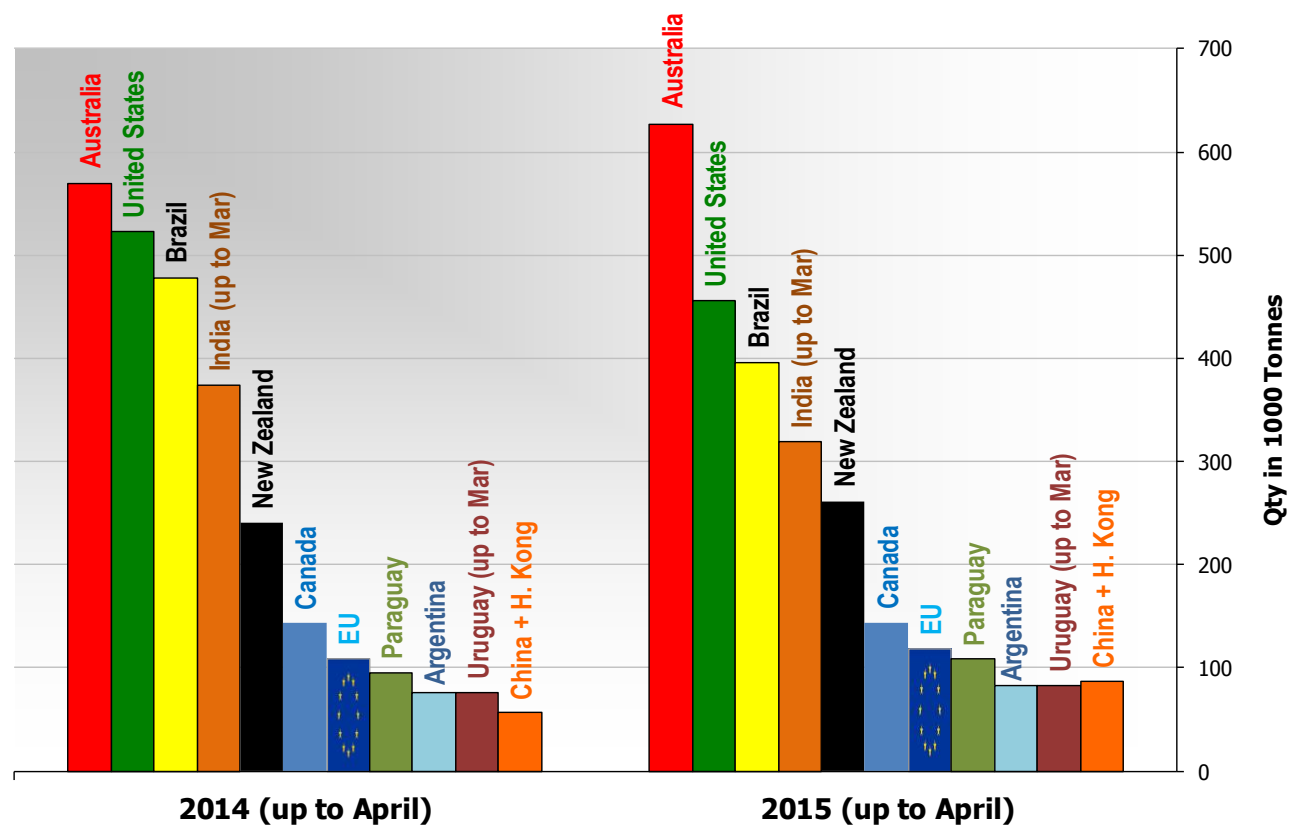
25 June 2015



Source: GTA * Excluding live animals (0102), fats, preparations of several types of meat (0209, 0210 99 and 1602 90)

Main Exporters of BEEF Products (up to April)

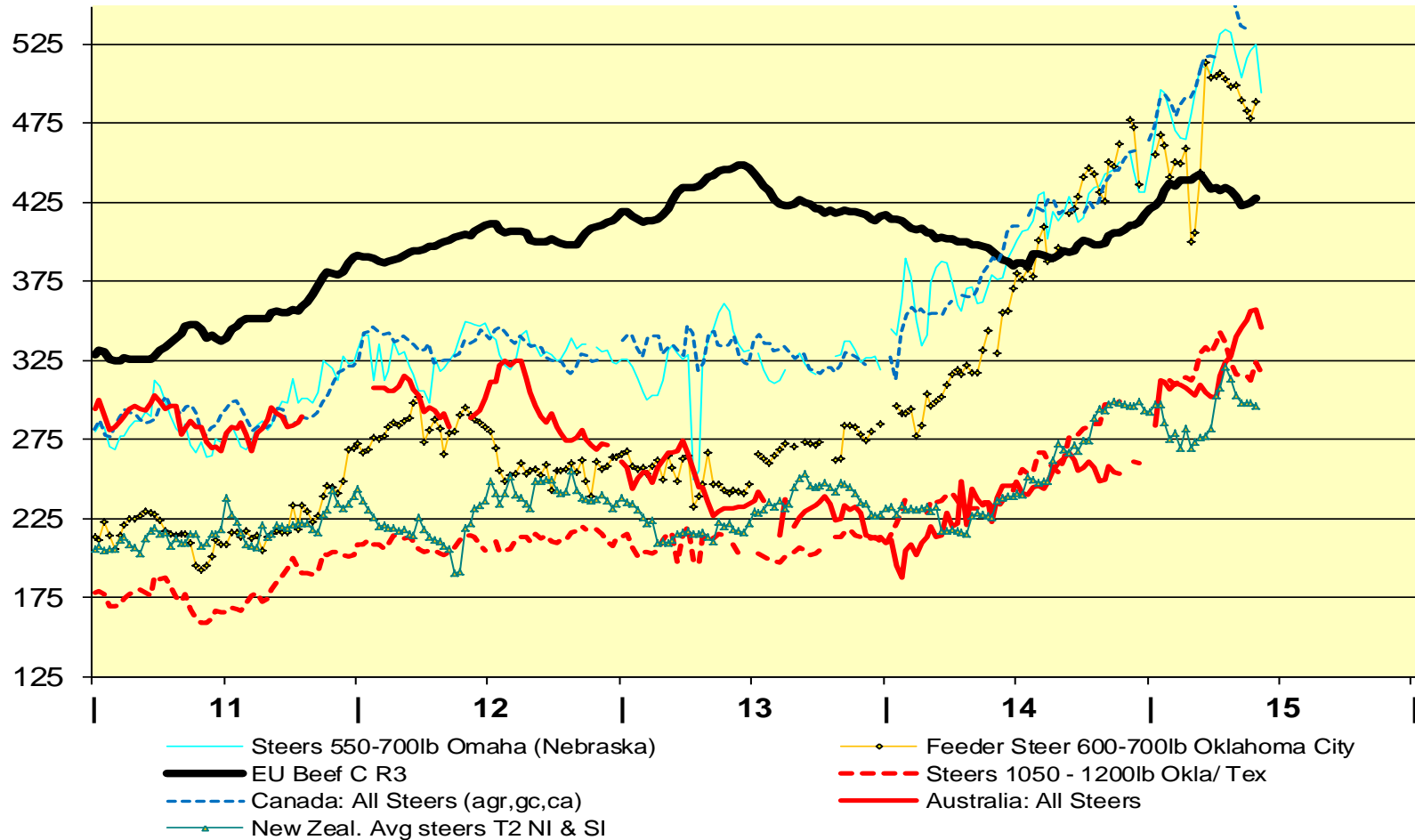
* Excluding live animals (0102), fats, preparations of several types of meat (0209, 0210 99 and 1602 90)



25 June 2015



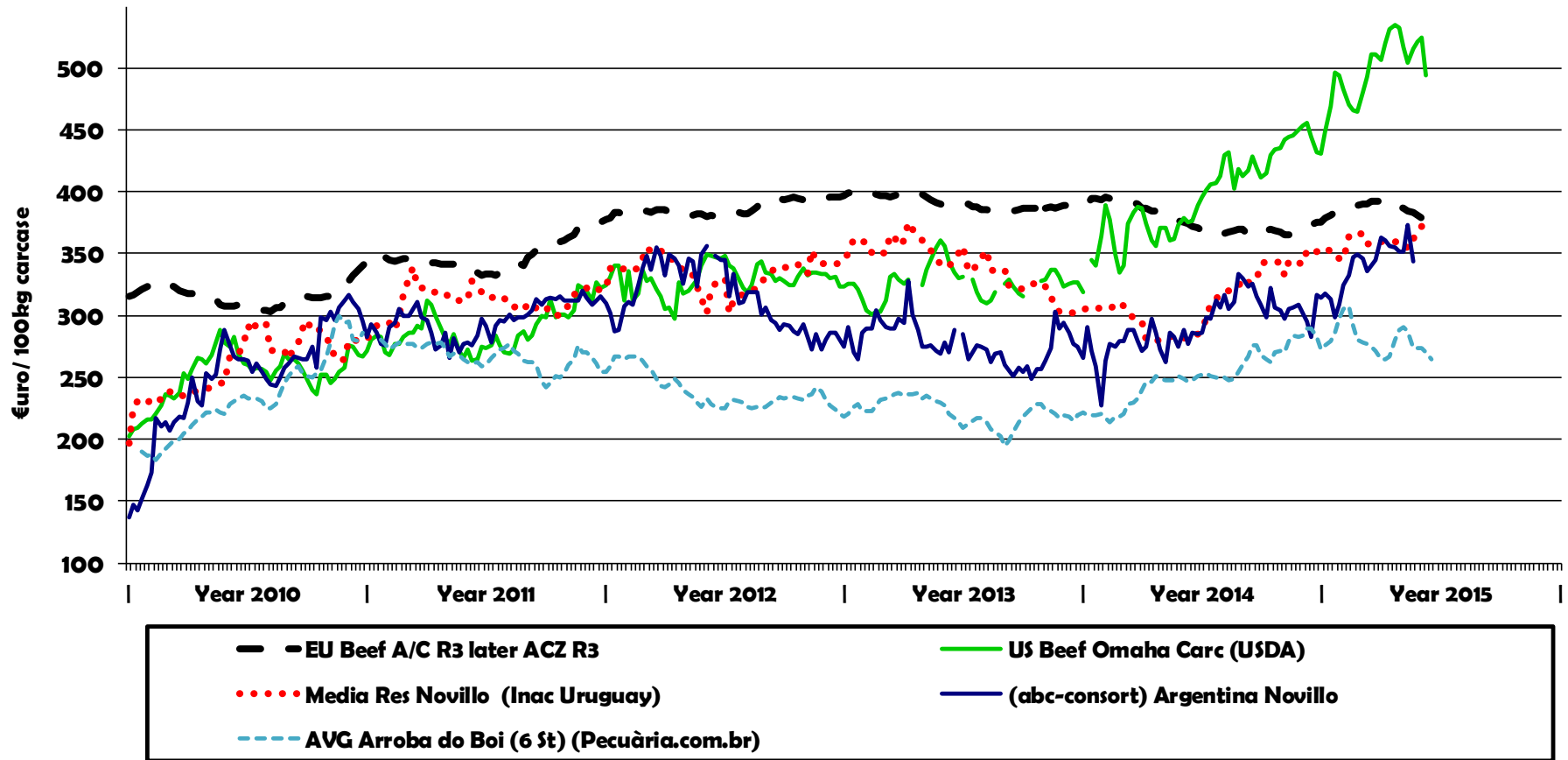
weekly US & EU Steer prices in €uro/100kg carcase



25 June 2015



Market prices for Adult Male Bovine in EU, US, BR, UY & AR



25 June 2015

High Quality Beef Import Quota



Hilton Quota		Regulation (EU) N° 593/2013						
		Quantity allocated (Tons)	2012/2013		2013/2014		2014/2015*	
			Use		Use		Use	
09.4001	Australia	2 250		0.0%		0.0%		0.0%
09.4004	Argentina	200	33.57	16.8%	15.71	7.9%	7.16	3.6%
09.4450	Argentina	30 000	24 336.10	81.1%	23 663.86	78.9%	19 661.77	65.5%
09.4451	Australia	7 150	6 441.07	90.1%	7 138.89	99.8%	6 337.42	88.6%
09.4452	Uruguay	6 300	6 289.20	99.8%	6 278.75	99.7%	5 499.95	87.3%
09.4453	Brazil	10 000	2 977.93	29.8%	4 078.92	40.8%	7 256.80	72.6%
09.4454	New Zealand	1 300	1 281.13	98.5%	1 299.61	100.0%	1 149.89	88.5%
09.4002	Canada/US	11 500	432.44	3.8%	431.80	3.8%	347.96	3.0%
09.4455	Paraguay	1 000		0.0%		0.0%		0.0%
Total Beef		67 250	41 757.87	62.1%	42 891.83	63.8%	40 253.79	59.9%
Total Buffalo		2 450	33.57	1.4%	15.71	0.6%	7.16	0.3%
Total		69 700	41 791.44	60.0%	42 907.54	61.6%	40 260.95	57.8%

* up to 30/04/2015

25 June 2015

Import Quota



Quota erga omnes

Regulation (EU) No 481/2012

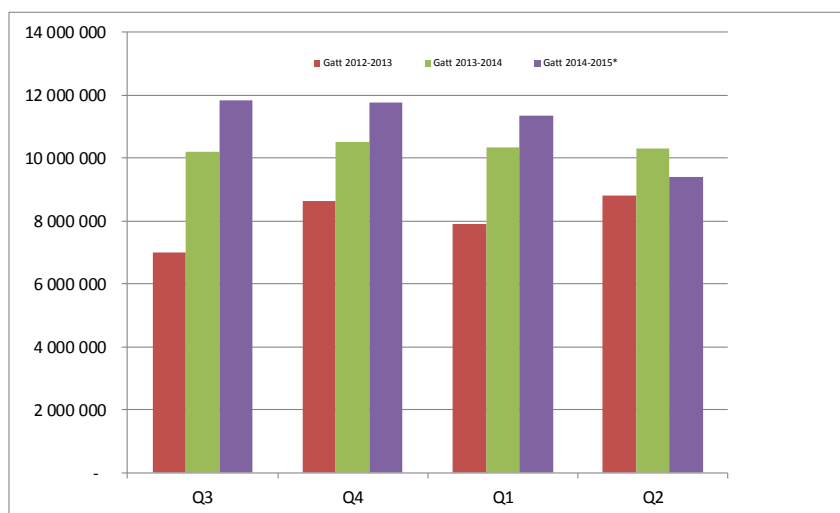
en kg	2012-Q3	2012-Q4	2013-Q1	2013-Q2	TOTAL
Gatt 2012-2013	7 008 604	8 614 987	7 889 192	8 810 806	32 323 589
Available	9 825 000	12 050 000	12 050 000	12 050 000	45 975 000
Use	71.3%	71.5%	65.5%	73.1%	70.3%

	2013-Q3	2013-Q4	2014-Q1	2014-Q2	TOTAL
Gatt 2013-2014	10 190 908	10 493 437	10 349 842	10 282 469	41 316 656
Available	12 050 000	12 050 000	12 050 000	12 050 000	48 200 000
Use	84.6%	87.1%	85.9%	85.3%	85.7%

	2014-Q3	2014-Q4	2015-Q1	2015-Q2	TOTAL
Gatt 2014-2015*	11 840 303	11 748 359	11 351 112	9 399 817	44 339 590
Available	12 050 000	12 050 000	12 050 000	12 050 000	48 200 000
Use	98.3%	97.5%	94.2%	78.0%	92.0%

* Until 12/06/2015

Q3 Q4 Q1 Q2



25 June 2015